



16th Annual
Monday, March 24, 2025
Heartland Livestock, Swift Current, SK

SWS SOUTHWEST SHOWCASE BULL SALE

WELCOME FROM BOHRSON MARKETING

The North American cowherd has shrunk immensely. Cattle prices are at an all time high on all classes and this has truly put the "cow people" at the fore front and in the driver seat. Finally we are seeing the cow/calf people be rewarded for sticking it out through hard times. With that said, there truly is no better time to surround yourself with a quality product you can count on to produce high performing, easy doing and low maintenance cattle and that is exactly what you will find at the SWS. The bulls you purchase and utilize this year could very well sire you the highest paying set of calves you have ever had and as you analyze the bulls on offer here for this 16th annual event you will see there is many options no matter what your needs may be. On behalf of this great group of consignors, we are pleased to welcome you all to the South West Showcase.

The really unique and interesting this about this sale is the consistency in type and kind spread throughout 3 great programs. They are like minded, knowledgeable stock folks that always do their best in sourcing powerful walking bulls and elite sires to aid in, in order to advance their own operations to ultimately successfully impact their customers. All three of these outfits put a tonne of emphasis on the value of the mother cow and she is expected to calve, out produce herself, re breed and repeat with no troubles. They stress the importance of feet, udders and fleshing ability and this in turn has left all three ranches with the set of bulls you'll get to evaluate here. X-T Simmentals, Boundary Ranch and Sherger Ranching are a trusted source to purchase elite Simmental genetics that are geared towards today's industry. These bulls are heavy haired, sound structured and performance orientated with many calving ease options as well. As you analyze these bulls in person on sale day, it's always commendable as you never know where one string of bulls begins and the other ends, they are just that uniform in quality.

We do hope you make plans to join us on March 24th at Heartland Livestock Swift Current for some great cattle, people and hospitality. Be sure to give any of them a call prior to sale day to visit about the bulls and your herds needs so they can help point you in the right direction. If you are unable to attend for any reason, feel free to give us a call as we would be happy to assist in your bidding and buying needs. We look forward to visiting with you!

Best regards,

BOHRSON MARKETING



BOHRSON
MARKETING SERVICES

BOHRSON MARKETING

28336 TWP Rd 320, Mountain View County, AB T4H 4M7

Phone: 306-270-6082

bohrsonmarketing@gmail.com



Scott Bohrson
403-370-3010



Taylor Richards
306-821-4169



Rob Voice
306-270-6082



Martin Bohrson
306-220-7901



Daryl Snider
780-385-5561



Jaxon Payne
306-830-0456



Nate Marin
306-869-7130



Cody Haney
403-843-8806



Riley Bohrson
639-213-7777

WELCOME TO THE 16TH ANNUAL SOUTHWEST SHOWCASE BULL SALE

MONDAY, MARCH 24, 2025 - 1:00PM
HEARTLAND LIVESTOCK, SWIFT CURRENT, SK

BOUNDARY RANCH

Darby & Sarah Delorme

Box 36, Robsart, SK S0N 2G0

P: 306.299.2006

Sarah: 306.299.7779

Darby: 306.662.7993

www.boundaryranch.ca

boundaryranch@sasktel.net

SCHERGER RANCHING

**Lane, Kacie, Andie &
Millie Scherger**

Box 1462

Swift Current, SK S9H 3X5

Lane: 306.750.2129

lanescherger@gmail.com

X-T SIMMENTALS

**Don Lundberg & Ryan
Lundberg**

Box 297, Eastend, SK S0N 0T0

P: 306.295.3843

Ryan: 306.295.7999

Don: 306-295-8182

x-tsimmentals@sasktel.net

{ \$200 CREDIT }
**TAKE YOUR BULL
HOME SALE DAY**

SALE DAY INFORMATION

SALE CONTACTS

Bohrson Marketing

Scott Bohrson 403-370-3010
Rob Voice 306-270-6082
Taylor Richards 306-821-4169
Darryl Snider 780-385-5561
Cody Haney 403-845-8806

AUCTIONEER

Donny Peacock 306-662-8288

ONLINE BIDDING

DLMS
Mark Shologan 780-699-5082



INSURANCE

Blythman Agencies Ltd 306-662-2604

SALE HEADQUARTERS

Holiday Inn Express 877-654-0228

SPECIAL REPRESENTATIVES

Shane Williams CSA President
Blaine Barnett SSA President
Melissa McRae MSA President
Ben Farrant ASA President

INSURANCE

Blythman Agencies Ltd 306.662.2604

SIGHT UNSEEN PURCHASE PROGRAM

If you are unable to attend the sale but are interested in bulls, give the consignors a call and they will personally go over the bulls and your program and recommend bulls that would meet your needs and refer you to one of the sale staff who will represent your needs in a professional and confidential manner.

100% GUARANTEE

All bulls are guaranteed to be satisfactory breeders in accordance with CSA guidelines. Should a problem occur barring physical injury or mismanagement, a bull of equal value will be provided or a credit will be issued towards the purchase of another bull. We guarantee you will have a bull to service your cows.

HEALTH AND FERTILITY

All bulls will have a scrotal measurement and a vet examination done prior to the sale. All bulls over 12 months of age will also be semen tested; any bulls under 12 months of age will return to the seller's farm to be tested after the sale. These bulls will be delivered once a semen test has been passed. All bulls have been treated with Ivomec and have current vaccinations. Contact the breeder for specific herd health programs.

TERMS & CONDITIONS

Cattle will sell under the standard terms & conditions put forward from CSA & BMS. These are available upon request.

CATALOGUE DESIGN

The information printed has been supplied by the seller and believe to be accurate. Updated sheets and announcements from the block will take precedence over any incorrect printed material.

IN-HERD USE SEMEN RIGHTS

The Southwest Showcase consignors reserve the right to collect semen on any bull in the sale for their in-herd use only. Any questions please contact the consignors.

BULL DEVELOPMENT & DELIVERY

The Southwest Showcase consignors will keep bulls free of charge until May 1st, 2025. Buyers need to insure the bulls while being cared for by the consignors.

Option A

Bulls can be picked up at Heartland Livestock sale day and a \$200 discount will be deducted from the sale price

Option B

At the buyer's option and risk, the bulls can be returned to the consignor's farm and picked up anytime at the buyer's convenience.

Option C

Please make arrangements with the consignor if trucking is required.

EPD EXPLANATION

EPDs are "Expected Progeny Differences". They are a useful tool in selection. EPDs incorporate the individual animal with its averaged ancestry performance. EPDs do not compare across cattle breeds, they are individually based per breed. EPDs indicate a probable variance above or below breed average for that trait for a given bull's progeny. Use them for guidance in the direction you want your herd to go. With the release of the BOLT system, data is transmitted to the evaluation weekly and new results are loaded weekly. This means that averages and percentiles are subject to ongoing change. Please use the CSA website for the most up to date and accurate averages and percentile rank information. EPDs for this catalogue were taken on February 10.

CSA Average Spring EPDs							
CE	BW	WW	YW	MCE	Milk	MWW	CWT
8.1	3.4	78.6	114.4	4.4	26.2	65.4	26.4

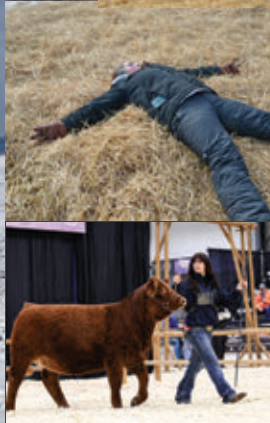
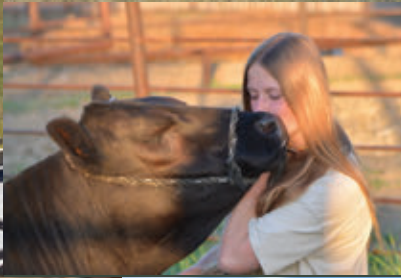
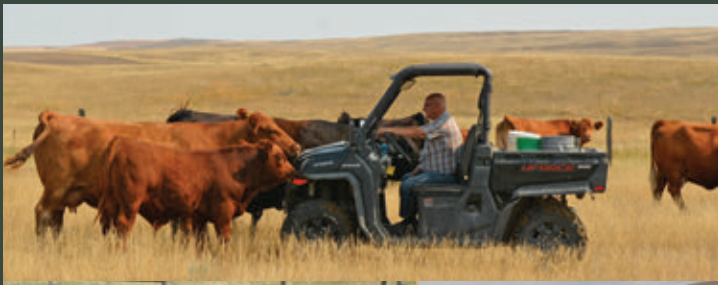
Buyers Draw

Southwest Genetics

Swift Current, SK
306.625.7479

THANK YOU TO OUR SPONSORS

\$200 CREDIT
TAKE YOUR BULL
HOME SALE DAY



X-T SIMMENTALS

Don Lundberg & Ryan Lundberg
Box 297, Eastend, SK S0N 0T0

P: 306.295.3843
Ryan: 306.295.7999 Don: 306-295-8182
ryanxbart@gmail.com

On behalf of the Lundberg family, we send you a warm welcome to the 16th annual SWS bull sale. It feels like our first sale was only a couple of years ago.

Without you, our many repeat customers and friends we have made over the years this sale would not be possible. We really appreciate each and every one of you.

We feel this is our strongest set of bulls to date. If you compare the weight per day of age on our bulls they will stand right in with any bull pen you will tour. Our bulls are hand fed Bullseye pelleted ration twice daily, along with free choice chopped crested wheat hay. They are fed to be grown out, not fattened. Only one of our bulls will be 12 months of age come semen test day but they will all be done to ensure that our vet feels confident that they are sound and will pass by 13 months. We have done this for years and have had virtually no problems.

If you are in our area or feel like going for a drive, we would be happy to tour you through the bull pen and take you out to see the dams of the bulls.

We wish you the best with your bull purchases and look forward to good times in the cattle industry ahead.



X-T Simmentals

Don and Ryan Lundberg

1

X-T BLACK MAFIA 5M



- Mafia 5M has it all. Pedigree, performance, EPD's and phenotype
 - Junior bull calf champion at Agribition
 - All breed bull calf champion at the ultra-competitive Swift Current Pen Show
 - His dam, 5J, is a model young cow with a bit of a different twist to her pedigree
 - 5J was shown twice as a bred, never being defeated in a breed and highlighting her trips to town with a Reserve Supreme championship at the Young Ranchmen's against very stiff competition
 - We believe there is a world of potential in Mafia
 - X-T retains the right to 100 doses of semen for in herd use only
- Homozygous Polled**
Homozygous Black



Dam: X-T Black Julie 5J



Dam: X-T Black Julie 5J



5M at Agribition 2024

BPG1484527

LW 5M

POLLED

MAR. 17, 2024

ACT BW	200ACT WT	CE	BW	WW	CSA Spring EPDs YW	Milk	MCE	MWW	CWT
92	970	8.5	4.2	97.6	147.4	21.4	5.8	70.2	43.6

NGDB STRUCTURE 34D
S: RF CALIBER 014G
RF NOT JUST A FLIRT 404B

IPU BLACK CINCH 95G
D: X-T BLACK JULIE 5J
X-T BLACK MISTRESS 5E

NCB COBRA 47Y
NGDB LOUISE 411 B
SVS CAPTAIN MORGAN 11Z
RF CERTAINLY FLIRTIN 202Z

SPRINGCREEK LINER 56U
TRI-R MS BLAKE 33B
MRL MISSILE 138C
TWIN BRAE BETTINA 402B

2

X-T BLACK MAMBA 11M



- A really long-made bull with a big hip, huge top and extra bone all while maintaining an extremely attractive front 1/3
- His dam is a different pedigree for us and she has been very productive. Her first calves were twin bulls that we used in our commercial herd, then a Missile bull that sold through the sale to Bertram Ranch, and a bred (LW15L) who is in herd and is currently Reece's 4-H project. She is going to be ultra competitive!
- Black Mamba will produce the type of females meant to build a herd around
Homozygous polled
Homozygous black

Maternal Sister:
LW 15LMaternal Brother:
LW 6J

BPG1499684 LW 11M POLLED MAR. 20, 2024

ACT BW	200ACT WT	CE	BW	WW	CSA Spring EPDs		MCE	MWW	CWT
					YW	Milk			
89	875	9.7	3.6	97.4	146.8	17.7	6.5	66.4	40.7

NGDB STRUCTURE 34D
S: **RF CALIBER 014G**
RF NOT JUST A FLIRT 404B

VCL LKC EQUITY 608D
D: **X-T MISS CASH FLOW 1G**
KWA MS RIDDLER 31E

NCB COBRA 47Y
NGDB LOUISE 411 B
SVS CAPTAIN MORGAN 11Z
RF CERTAINLY FLIRTIN 202Z
PROFIT
BF MISS CRYSTEEL TANGO
LFE THE RIDDLER 323B
DOUBLE BAR D FINESSE 411C

3

X-T BLACK ESTATE 19M



- Big, powerful performance bull with a bit more frame yet maintains the deep middle 1/3
- 19M's dam, 6E, is one of our favorite Missile females, so powerful yet easy-doing, just like 19M
- This is 6E's fourth bull through this sale with sons going to Todd Humphrey and Don Ebbert
- Spring Creek Estate was a \$70k herd bull purchase in partnership with the good people and friends at Ashworth Farms and Ranch
- We calved out a large number of Estate females last spring and would love the opportunity to show them to you. Their type and udder quality is impeccable.
Homozygous polled
Homozygous black



Sire: Springcreek Estate 58H

Maternal Brother:
LW 5G

BPG1499685 LW 19M POLLED MAR. 23, 2024

ACT BW	200ACT WT	CE	BW	WW	CSA Spring EPDs		MCE	MWW	CWT
					YW	Milk			
100	910	3.4	5.7	93.5	132.5	21.4	2.3	68.2	28.3

NGDB STRUCTURE 34D
S: **SPRINGCREEK ESTATE 58H**
SPRINGCREEK ABBEY 99E

MRL MISSILE 138C
D: **X-T BLACK MISTRESS 6E**
X-T MISS MATERNAL 47S

NCB COBRA 47Y
NGDB LOUISE 411B
LFE MCDAVID 413C
SPRINGCREEK ABBEY 10Z
COME AS U R RED ROCKET
MRL MISS 2423Z
TNT FORTUNE BUILDER P247
X-T MISS STINGER 77G

4

X-T BLACK SLIDER 52M

Sire: KWA Slider 196H

**BPG1499679****LW 52M****POLLED****APR. 4, 2024**

CDI VEGAS 26X
S: KWA SLIDER 196H
 CROWE GOLDIE 3F

SPRINGCREEK ESTATE 58H
D: X-T MISS ESTATE 109K
 X-T BLACK MS LINER 34C

HSF HIGH ROLLER 12T
 CDI MS CROCKET 110U
 HART STATE OF WAR 056C
 CROWE GOLDIE 3C

NGDB STRUCTURE 34D
 SPRINGCREEK ABBEY 99E
 MRL WALK THE LINE 164W
 X-T MISS MATERNAL 32W

ACT BW	200ACT WT	CE	BW	WW	CSA Spring EPDs				
					YW	Milk	MCE	MWW	CWT
82	840	11.1	1.3	86.4	128.3	23.0	7.3	66.2	27.7

- Real top end heifer bull. You won't be sacrificing quality to get calving ease with this guy
- With Slider semen no longer on the market, step in and get a son while they are still available
- Out of one of our best young Estate daughters who was a member of our championship pen of three breds, all Estates
- Granddam 34C is also the dam of the LW3M bull in the sale, a very productive cow family.

Homozygous polled, Heterozygous black

5

X-T BLACK ESTATE 3MMaternal Brother:
LW 8J**BPG1499683****LW 3M****POLLED****MAR. 12, 2024**

NGDB STRUCTURE 34D
S: SPRINGCREEK ESTATE 58H
 SPRINGCREEK ABBEY 99E

MRL WALK THE LINE 164W
D: X-T BLACK MS LINER 34C
 X-T MISS MATERNAL 32W

NCB COBRA 47Y
 NGDB LOUISE 411B
 LFE MCDAVID 413C
 SPRINGCREEK ABBEY 10Z

MRL BLACK BEAR 79S
 IPU MS BEEF 98P
 TNT FORTUNE BUILDER P247
 X-T MISS LOTTERY 218N

ACT BW	200ACT WT	CE	BW	WW	CSA Spring EPDs				
					YW	Milk	MCE	MWW	CWT
87	865	2.1	6.8	90.1	130.0	21.7	3.0	66.8	30.4

- Very attractively made bull with a smooth front 1/3, some extra rib shape, lots of bone and really good hair
- Near the top of the breed for W.W. and Y.W. EPD's
- Dam is a real nice MRL Walk the Line cow who has been a real female producer for us, only having one other bull who sold to Sawki Ranch. She is also the granddam of the Black Slider 52M bull in the sale.

Homozygous polled, Heterozygous black

6

X-T BLACK KNOCKOUT 60M**APPLIED FOR****LW 60M****POLLED****APR. 5, 2024**

SVS BROOKS 669D
S: TRI-R KNOCKOUT 1K
 SKORS BLACK MICKEY 4D

IPU BLACK CINCH 95G
D: X-T LADY CINCH 68J
 X-T MISS BISMARCK 25B

MRL RED WHISKEY 101B
 SVS RED SARA 92X
 W/C WIDE TRACK 694Y
 SKORS BLACK MICKEY 246Z

SPRINGCREEK LINER 56U
 TRI-R MS BLAKE 33B
 S A V BISMARCK 5682
 X-T MISS SPECIALIST 44Z

ACT BW	200ACT WT	CE	BW	WW	CSA Spring EPDs				
					YW	Milk	MCE	MWW	CWT
90	815	-	-	-	-	-	-	-	-

- A blaze faced bull that we really like
- Wide based, big bellied, really thick topped and good to look at from every angle
- True beef bull in every aspect of the term
- Dam 68J is an IPU Black Cinch daughter who is also the sire of the 5J cow, dam of our lead off black bull
- Take a good look at this guy, he is going to do someone's cow herd a lot of good

Homozygous polled, Heterozygous black

7

X-T BLACK ESTATE 51M

Maternal Brother:
LW 1J

**BPG1499678****LW 51M****POLLED****APR. 4, 2024**

NGDB STRUCTURE 34D
S: SPRINGCREEK ESTATE 58H
SPRINGCREEK ABBEY 99E

NCB COBRA 47Y
NGDB LOUISE 411B
LFE MCDAVID 413C
SPRINGCREEK ABBEY 10Z

MORE'S TANK 108Y
D: PWK MS BLK CANDY 42Z 19C
PWK MS BUGZ 58W 42Z

SPRINGCREEK TANK 57P
HAAS RANCH U42
WHEATLAND BULL 15X
PWK MS SHOW OFF 63T 58W

ACT BW	200ACT WT	CE	BW	WW	CSA Spring EPDs				
					YW	Milk	MCE	MWW	CWT
95	830	7.3	4.0	83.1	122.0	23.5	4.2	65.1	25.3

- Solid black, thick made bull out of a cow we purchased at the WLB dispersal
 - Dam produced a \$17k bull to Lazy S through this sale
 - Maternal sister to 51M raised a son that sold through this sale to Brian Hysaw of Mankota
- Polled, Homozygous black**

8

X-T BLACK CALIBER 82M

Maternal Brother:
LW 47G

**BPG1499839****LW 82M****POLLED****APR. 6, 2024**

NGDB STRUCTURE 34D
S: RF CALIBER 014G
RF NOT JUST A FLIRT 404B

NCB COBRA 47Y
NGDB LOUISE 411 B
SVS CAPTAIN MORGAN 11Z
RF CERTAINLY FLIRTIN 202Z

MRL WALK THE LINE 164W
D: X-T BLACK LINER 94Z
GW MISS LUCKY DICE 234M

MRL BLACK BEAR 79S
IPU MS BEEF 98P
GW LUCKY DICE 187H
GW MISS BLEND 579E

ACT BW	200ACT WT	CE	BW	WW	CSA Spring EPDs				
					YW	Milk	MCE	MWW	CWT
92	810	7.4	4.8	93.7	143.7	17.9	5.6	64.8	42.0

- Another good Caliber son out of a thirteen year old dam who has been a real female producer for us
 - The MRL Walk the Line females were some of the best black cows we have ever owned, they lasted forever and stayed sound right to the end
 - Strong weaning and yearling EPD's on this guy
- Homozygous polled, Homozygous black**

9

X-T BLACK ESTATE 38M

Maternal Sister:
LW 51D

**BPG1499687****LW 38M****POLLED****APR. 2, 2024**

NGDB STRUCTURE 34D
S: SPRINGCREEK ESTATE 58H
SPRINGCREEK ABBEY 99E

NCB COBRA 47Y
NGDB LOUISE 411B
LFE MCDAVID 413C
SPRINGCREEK ABBEY 10Z

MRL WALK THE LINE 164W
D: X-T BLACK LINER 47Z
X-T MISS MATERNAL 145U

MRL BLACK BEAR 79S
IPU MS BEEF 98P
TNT FORTUNE BUILDER P247
X-T MISS BIGSKY 70N

ACT BW	200ACT WT	CE	BW	WW	CSA Spring EPDs				
					YW	Milk	MCE	MWW	CWT
97	825	2.4	6.1	86.8	124.9	19.5	1.7	62.9	28.4

- If you want to put the money stripe on your calves, then this is the bull for you
 - Really thick bodied and deep ribbed
 - Dam is a thirteen year old cow how has remained sound with a perfect udder and great feet
- Homozygous polled, Heterozygous black**

10

X-T MOBSTER 9M



- High end herd bull prospect here
- Very complete made with extra length and growth, no holes in this guy no matter the angle you look at him
- Really good growth and milk numbers
- Dam always produces one of our top calves every year from a variety of different sires and has had three sons through this sale
- The 3D Trustin cows did a lot of good for the Carson family of Northern Light Simmentals
- Take some extra time to analyze this guy, he is a good one
- **X-T retains the right to 100 doses of semen for in herd use HOMOZYGOUS POLLED**



Maternal Sister: LW 3E



Maternal Brother: LW 3K

PG1484539

LW 9M

POLLED

MAR. 20, 2024

ACT BW	ADJ WW	CE	BW	WW	CSA Spring EPDs		MCE	MWW	CWT
					YW	Milk			
94	880	8.4	3.4	92.2	134.6	28.1	2.7	74.2	29.8

SVS TYCOON 841F
S: SVS RANCHER 42H
 HLTS SAMMIE

3D TRUSTIN 47T
D: NAC WINNY 104B
 NAC WINCHESTER 50Y

SVS BROOKS 669D
 SVS RED ANNIE 411B
 WS BEEF KING W107
 BRANT DONT YA LOVE ME
 KENCO/MF POWERLINE 204L
 X-T MISS DESTINY 73K
 WINCHESTER HR P8315
 NAC 42W

11

X-T TOP FLIGHT 1M



PG1499682

LW 1M

POLLED

MAR. 8, 2024

MAR MAC UTAH WHISKY 52E
S: WLB TOP TIER 456G
 WLB 47Y FAE 343E

WLB BULL 3011C 540H
D: CCCC RED VALLEY GIRL 57K
 CCCC RED FREERUSH 25G

TNT BOOTLEGGER Z268
 MAR MAC UTAH'S DREAM 79U
 SUNNY VALLEY FORCE 47Y
 WLB 756T TRESSIE 3556B
 LFE BLOCKBUSTER 3011C
 WLB 42Z GAILYN 411E
 TNT BOOTLEGGER Z268
 CLAYHILL RED FREERUSH 11Y

ACT BW	ADJ WW	CE	BW	WW	CSA Spring EPDs		MCE	MWW	CWT
					YW	Milk			
78	795	13.8	1.5	76.5	100.6	26.7	5.5	65.0	20.9

- Sure fire calving ease bull
- Dam is a real nice, solid red female with a stacked pedigree for generations back
- We really like the Top Tier Females we have. They are thick bodied and easy fleshing

12

X-T TYCOON 40M



- As dark red as they come and just keeps getting better every day. Every time we look at this guy we like him even more
- Very attractively made, deep bodied and heavily muscled
- His dam is our best red J female, a real standout
- The KWA Governor daughters are all big, attractive, high producing females who put a lot of performance into their calves
- A definite herd bull prospect

HOMOZYGOUS POLLED

X-T SIMMENTALS

PG1499677

LW 40M

POLLED

APR. 3, 2024

ACT BW	ADJ WW	CE	BW	WW	CSA Spring EPDs		MCE	MWW	CWT
					YW	Milk			
97	855	7.2	3.2	90.8	139.2	24.8	3.2	70.2	33.8

SVS TYCOON 841F
S: DEEG MR TYCOON 96J
 SVS RED SARA 704E

KWA GOVERNOR 25G
D: X-T LADY GOVERNOR 11J
 X-T MISS FORCE 29Y

SVS BROOKS 669D
 SVS RED ANNIE 411B
 IPU RED DEPUTY 25C
 SVS RED SARA 517C
 CDI AUTHORITY 77X
 KWA MS ROCK 22Z
 HOOKS SHEAR FORCE 38K
 X-T MISS TURBO 50W



Sire: Deeg Mr Tycoon 96J

14

X-T TYCOON 112M



PG1499682

LW 1M

POLLED

MAR. 8, 2024

SVS TYCOON 841F
S: DEEG MR TYCOON 96J
 SVS RED SARA 704E

KWA ROOSEVELT 63F
D: X-T MISS ROOSEVELT 15J
 X-T MISS BLACK LINER 27Y

SVS BROOKS 669D
 SVS RED ANNIE 411B
 IPU RED DEPUTY 25C
 SVS RED SARA 517C
 CDI AUTHORITY 77X
 KWA MS ROCK 138Z
 MRL WALK THE LINE 164W
 X-T BLACK SHOOTER 128U

ACT BW	ADJ WW	CE	BW	WW	CSA Spring EPDs		MCE	MWW	CWT
					YW	Milk			
90	770	5.4	4.6	93.3	143.9	24.2	2.1	70.9	34.4

- Dam is a blaze face Roosevelt daughter who will catch your eye every time
- Grand dam 27Y is still going strong at fourteen and has been and outstanding producer
- This calf is by far the youngest bull in the sale, but even at this early stage looks very well equipped to go to work
- Smaller framed bull that is just built so right

15

X-T MOBSTER 9M



- Dark cherry red bull who can really get out and travel
- Very attractive made front end blending in to a sweeping rib and lots of muscle where it counts
- Your can never go wrong with a bull out of a Missile cow
- 70F's only other son sold to Owen Schmitz

HOMOZYGOUS POLLED

PG1499686 LW 28M POLLED MAR. 28, 2024

ACT BW	ADJ WW	CE	BW	WW	CSA Spring YW	EPDs Milk	MCE	MWW	CWT
88	845	8.8	3.2	91.7	128.8	25.3	4.5	71.2	26.1

SVS TYCOON 841F
S: SVS RANCHER 42H
HLTS SAMMIE

MRL MISSILE 138C
D: X-T MISS RED MISSILE 70F
X-T MISS BLACKTRACKER104B

SVS BROOKS 669D
SVS RED ANNIE 411B
WS BEEF KING W107
BRANT DONT YA LOVE ME
COME AS U R RED ROCKET
MRL MISS 2423Z
MRL TRACKER 17Z
X-T RED ACCER 61X



Maternal Grandsire: MRL Missile 138C

16

X-T RANCHER 85M



PG1499688 LW 85M POLLED APR. 6, 2024

SVS TYCOON 841F
S: SVS RANCHER 42H
HLTS SAMMIE

R PLUS YUMA 9087G
D: IPU 7F MS RED FRESCA 84J
TRI-R MS FRESCA 7F


SVS BROOKS 669D
SVS RED ANNIE 411B
WS BEEF KING W107
BRANT DONT YA LOVE ME
R PLUS 5015C
MISS R PLUS 3007A
PWK MAX FACTOR 137Y 17B
MRL MISS 552U

ACT BW	ADJ WW	CE	BW	WW	CSA Spring YW	EPDs Milk	MCE	MWW	CWT
92	830	8.6	3.4	95.5	140.6	26.9	5.7	74.7	34.9

Rancher son with some extra bone and muscling
formance numbers. He is in the top 5% of the breed
nice Yuma daughter that we purchased at Simmsational
is a very good Top Tier bull that sold last year to Sandra



Maternal Brother:
LW 1L




THANK YOU TO OUR 2024 BULL SALE BUYERS

BIRCH CREEK RANCH
BRAUN LAND & CATTLE
CARMICHAEL FARMING
CLEAR VIEW ANGUS LTD
CONGRESS LAND & CATTLE INC
COULEE CROSSING
DAINES CATTLE
DIXON PRODUCERS LTD
DOWNEY FARMS
FLOWING WELL RANCH
FLYING H ENTERPRISES
JANZEN RANCHES
LAZY BAR B SIMMENTALS
LP FARMS
NA BAR LAND & CATTLE
ROCKY MEADOW RANCH
JP CATTLE CO

RUETZ FARMS
RUZICKA FARMS
SANDSTONE FARMS
TOMADA ENTERPRISES
WADELLA RANCH
WADELLA RANCH
Y BAR FARMS INC
AUSTIN & ALANNA SPARKS
BARB GABRUCH
BRANDON LASOTA
CALVIN DAHL
CLINTON WAGNER
COLIN SELODY
DALE WEISS
DON EBBERT
DWAYNE & VERA SPARKS

JAMES LEROY
JASON UYTTERHAGEN
JODY HARDEN
JOHN HOWE
KEEGAN BUFFORD
KEVIN MCCULLOCH
KIM CRANDALL
MICHAEL LEISMEISTER
MIKE BOCHEK
RYAN GRINDHAM
SARA HUBER
SCOTT FRASEN
SCOTT GEHLEN
TONY PAGE
TRAVIS PENNER
WAYNE PETERSON
WILLIAM PAWLUK



BOUNDARY RANCH

Darby & Sarah Delorme
Box 36, Robsart, SK S0N 2G0

P: 306.299.2006
Sarah: 306.299.7779
Darby: 306.662.7993

boundaryranch@sasktel.net
www.boundaryranch.ca

On behalf of the Delorme Family, welcome to the 16th annual Southwest Showcase Bull Sale. Thanks to the bidders, buyers, family, and friends who have supported our program in the past. Your belief in our program is beyond humbling and we will continue to do our best to earn your investment.

After years of using mostly AI, we've slowly begun to transition into using more of our own bulls with nearly half of this offering being sired by our own genetics or walking bulls we've hand selected after a lot of homework. We feel this new approach is beginning to pay dividends as this is one of the strongest offerings we've put together.

We encourage anyone interested in the bulls to come visit the Ranch, where we will be happy to go through the bulls and their dams with you. If you can't come to the sale or the Ranch, feel free to call us and we will go over the offering with you.

Visit our website WWW.BOUNDARYRANCH.CA. Videos, weights, scrotals, sire & dam pictures, and a production record for each cow can be found on the site. All our bulls are Homozygous Polled and Color tested and almost all results are printed in this catalog. We look forward to visiting with you all sale day.



17 BOUNDARY WALK THE LINE 64M



The one we've loved since day 1. This soggy, free moving, bold ribbed, meat machine, has all the bells and whistles. His dam puts it all into her calves. She's heavy milking, but does it with excellent udder structure and nice small teats. She weaned off 67% of her body weight with 64M. We came very close to showing these two as a pair. 64M's gestation was only 282 days (dam's average on 5 calves). Full sister to 64M was the pick of the bred heifers, another sister in herd shares her dam's flawless udder structure. 64M ranked 1st of the red bulls for WW & YW, 2nd WADG & YWPDA, 3rd AWW & AYW, 4th WWPDA and EPDS TOP 1%WW, YW, & MWWT, 25%CE, 30%MILK, & MCE. 64M is the heavy weight in the pen, but also has an exceptionally strong maternal backing.

Homo Polled
Non - Diluter
Sire Verified



Dam: MAF Empress 30G



Sire of Lots 17, 18, 19, & 20:
Mader Walk The Line 92J



Udder quality of Maternal Sister:
Boundary Empress 213J

PG1470673

BOUN 64M

POLLED

JAN. 12, 2024

MADER WALK THIS WAY 224B
S: MADER WALK THE LINE 92J
IRCC DARLIN' 613D

ACT BW	ADJ WW	ADJ YW	CE	BW	WW	CSA Spring EPDs YW	Milk	MCE	MWW	CWT
94	801	1454	10.8	3.7	109.2	168.0	29.0	6.2	83.6	36.7

SVS ABSOLUTE 508C
D: MFR EMPRESS 30G
MFR RED EMPRESS 60E

NCB COBRA 47Y
MADER P IRON SUGAR 7X
MR HOC BROKER
DESTINY ODIN SHEA

WFL ABSOLUTE 51Y
SVS BLK JENNA 49A
SCISSORS COLLATERAL 18C
MFR EMPRESS 846U

18

BOUNDARY WALK THE LINE 100M



Dam:
Boundary Ms Spice 178F



PG1470689 BOUN 100M

POLLED JAN. 16, 2024

MADER WALK THIS WAY 224B
S: MADER WALK THE LINE 92J
IRCC DARLIN' 613D

BOUNDARY ESQUIRE 6C
D: BOUNDARY MS SPICE 178F
VIRGINIA MS SPICE 117W

NCB COBRA 47Y
MADER P IRON SUGAR 7X
MR HOC BROKER
DESTINY ODIN SHEA
NUG ROYAL RED 324A
BOUNDARY TUMBLER 15X
VIRGINIA RED TEXAS
VIRGINIA MS. NUTMEG 52N

ACT BW	ADJ WW	ADJ YW	CE	BW	WW	CSA Spring EPDs				
						YW	Milk	MCE	MWW	CWT
98	795	1448	7.6	4.8	102.9	152.8	27.2	5.2	78.7	40.1

Eye appealing, docile, stout, heavy performing, "Walk the Line" son. Reserve Champion Bull SCPS last fall and part of our string at MHPS. His well put together dam has the picture-perfect udder typical of "Esquire" daughters. Standout son sold to Oakview Simmentals. 100M had a gestation of only 280 days but ranked 2nd of the red bulls for WW & YW, 3rd WADG & YWPDA, 4th AWW & AYW, 5th WWPDA & YADG, and EPDS TOP 2%WW & YW, 3%MWWT that support those real-world numbers.
HETERO POLLED/ PARENTAGE VERIFIED

19

BOUNDARY WALK THE LINE 30M



Dam:
Boundary Natalia 63D



PG1470658

BOUN 30M

POLLED JAN. 7, 2024

MADER WALK THIS WAY 224B
S: MADER WALK THE LINE 92J
IRCC DARLIN' 613D

KUNTZ SHERIFF 8A
D: BOUNDARY NATALIA 63D
MMP RED RIZZLE 396B

NCB COBRA 47Y
MADER P IRON SUGAR 7X
MR HOC BROKER
DESTINY ODIN SHEA
KUNTZ MARSHALL 12Y
PEACOCK'S LI'L NETTIE 23Y
LRX THE GODFATHER 141Z
MMP NATALIA 796Y

ACT BW	ADJ WW	ADJ YW	CE	BW	WW	CSA Spring EPDs				
						YW	Milk	MCE	MWW	CWT
95	649	1303	9.0	2.5	91.8	143.3	25.5	4.8	71.4	38.3

Long, stylish, clean made bull, with good muscling. Dam was Champion 3 times at the SCPS. Son 185L was Champion Bull at SCPS and started this sale last year, selling to John Howe. Son 15G sold to Springhill Ranching, was also shown on dam. Two powerful, excellent uddered, "Tycoon" daughters in herd. Mat. Sister to dam with son in the sale Lot 28. 30M ranked 4th of the red bulls for YADG. EPDS TOP- 5%YW, 10%WW, 20%MWWT. Sound structure and desirable phenotype are built in.
HOMO POLLED

20

BOUNDARY WALK THE LINE 51M



Dam:
Boundary Kendra 56G



PG1470666

BOUN 51M

POLLED JAN. 10, 2024

MADER WALK THIS WAY 224B
S: MADER WALK THE LINE 92J
IRCC DARLIN' 613D

LRX ROYAL FLUSH 100C
D: BOUNDARY KENDRA 56G
BOUNDARY KENDRA 28C

NCB COBRA 47Y
MADER P IRON SUGAR 7X
MR HOC BROKER
DESTINY ODIN SHEA
NUG ROYAL RED 324A
LRX MS RED 76Z
SKORS RED ENTICER 48Z
SPRINGCREEK KENDRA 71W

ACT BW	ADJ WW	ADJ YW	CE	BW	WW	CSA Spring EPDs				
						YW	Milk	MCE	MWW	CWT
99	739	1414	7.6	4.1	106.8	165.9	22.7	5.2	76.1	48.8

Clean in his lines, long as a freight train, strong topped, carrying down into a round well-muscled quarter. His powerful dam is made exactly how we like them - big bodied, good uddered, and sound. A son similar to 51M sold to Dahl Farms. Grandam 28C was a farm favorite - so wide she didn't fit through any chute system. 51M had a gestation 281 days, ranked 2nd of the red bulls for YADG, 4th WW & YW, 5th AYW & YWPDA and has EPDS TOP- 1%WW & YW, 10%MWWT. **HOMO POLLED**

21

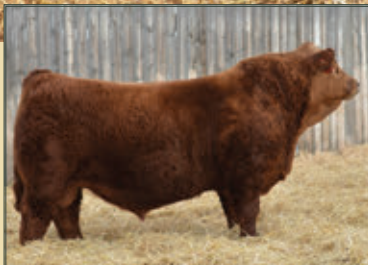
BOUNDARY FORMIDABLE 38M



38M is built solid and has "the look". This dark haired, super wide, level topped, big volume, heavy muscled "Formidable" son is tough to find a hole in. His dark red, long bodied, "Red Mountain" dam is already proving her worth; a powerful son sold to Flowing Well Ranch last year. Grandam is the beautiful, productive Reggie 2X cow, who put many top bulls through this sale, Great Grandam being our donor 110R, matriarch for the entire Reggie cow family. Big time power bull starting at a birth weight of only 85 lbs. gestation of 282 days and ending ranked 3rd of the red bulls for YADG with EPDS TOP- 2%YW, 10%WW, 20%DOC, 25%STAY, backing up his strong performance numbers. 38M is a real curve bender combining 2 of our strongest cow families – Sarah and Reggie.

HOMO POLLED

Dam: Boundary Reggie 44H

Sire of Lots 21 & 22:
Boundary Formidable 52FMaternal Granddam to Lots 21 & 25:
Boundary Reggie 2XGreat Granddam:
Virginia Ms Poll Reggie

PG1470662

BOUN 38M

POLLED

JAN. 8, 2024

WFL WESTCOTT 24C
S: **BOUNDARY FORMIDABLE 52F**
BOUNDARY SARAH 62A

TNT 90 PROOF Z401
WFL SWEET LICIOUS 1044X
TESS BLACK RAMPAGE 71W
BOUNDARY SARAH 19Y

ACT BW	ADJ WW	ADJ YW	CE	BW	WW	CSA Spring EPDs			MWW	CWT
						YW	Milk	MCE		
85	707	1369	6.8	3.8	92.4	152.8	21.9	1.8	68.1	59.6

KWA FLYF RED MOUNTAIN 16Z
D: **BOUNDARY REGGIE 44H**
BOUNDARY REGGIE 2X

IPU RED WESTERN 49X
KWA MS ROCK 14X
TNT TOP GUN R244
VIRGINIA MS POLL REGGIE

22

BOUNDARY FORMIDIABLE 92M

Dam:
Boundary Heidi 129H

PG1470683

BOUN 92M

POLLED

JAN. 16, 2024

WFL WESTCOTT 24C
S: **BOUNDARY FORMIDABLE 52F**
BOUNDARY SARAH 62A

TNT 90 PROOF Z401
WFL SWEET LICIOUS 1044X
TESS BLACK RAMPAGE 71W
BOUNDARY SARAH 19Y

WHEATLAND RED EXPRESS 890F
D: **BOUNDARY HEIDI 129H**
BOUNDARY HEIDI 58Y

WHEATLAND EXCHANGE 6139D
WHEATLAND LADY 212Z
KBSR EASY MONEY R3
BOUNDARY HEIDI 142W

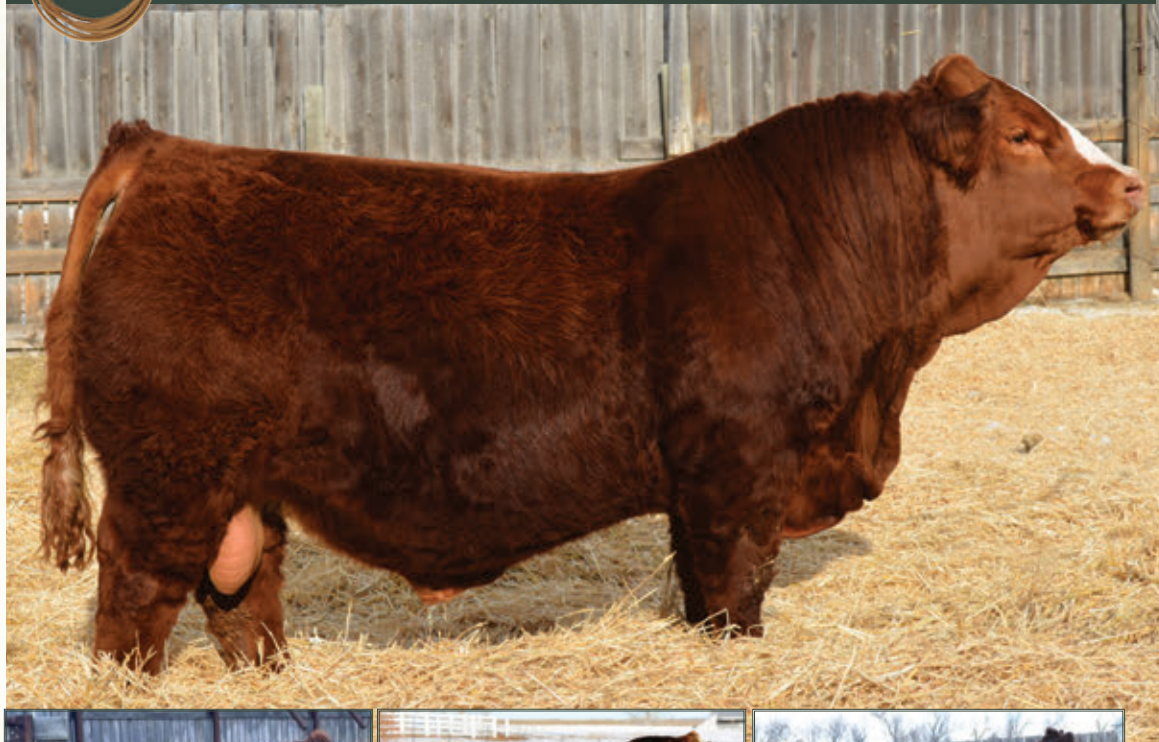
ACT BW	ADJ WW	ADJ YW	CE	BW	WW	CSA Spring EPDs			MWW	CWT
						YW	Milk	MCE		
104	759	1311	5.2	5.2	90.4	131.5	22.0	1.0	67.2	43.4

92M is smooth shouldered, clean made, liver red, and correct. His dam is also very correct in her make-up and is heavy milking, a trait that runs deep in the Heidi cow family. She weaned off 67% of her body weight with 92M. He has great performance EPDS TOP 15%WW & YW. If you believe phenotype counts for anything, then 92M should have calves that come a lot easier than his birth weight suggests. Another bull that combines performance and maternal traits.

HOMO POLLED

23

BOUNDARY LOYALTY 70M



Dark red with a money stripe, 70M is eye catching. His attractive skull shape, sweeping rib cage, and big round hip, won him lots of friends at the Medicine Hat Pen Show in December. Dam is a heavy milking "Regulator" daughter we purchased from Silverlake Farms. His maternal sister 129K sired by "Tycoon" is the type of cow you build a herd around. The "Loyalty" sire group provided us with some mighty fine heifers in our replacement pen. 70M has EPDS TOP 15%STAY, 20%YW. A very attractive bull with endless potential.

HOMO POLLED

BOUNDARY RANCH



Dam: Silverlake Gina 1G



Sire of Lots 23, 23, & 42:
LFE Loyalty 0836H



Paternal Sister:
Boundary Reggie 62M

PG14070674

BOUN 70M

POLLED

JAN. 13, 2024

LFE STRATTON 3094F
S: **LFE LOYALTY 836H**
IPU 10D POCAHONTAS 117F

LFE TRIUMPH 816A
LFE RS AMBER 2140B
IPU RED DEPUTY 25C
IPU 105L POCAHONTAS 10D

ACT BW	ADJ WW	ADJ YW	CE	BW	WW	CSA Spring EPDs			MCE	MWW	CWT
YW	Milk										
102	707	1344	4.9	6.3	82.4	130.1	21.2	1.3	62.4	42.4	

MRL REGULATOR 148D
D: **SILVER LAKE GINA 1G**
TCM MS BENGIE 3E

MRL CAPONE 130B
MRL MISS 677Y
SILVER LAKE CEASAR 100C
TCM MS BAILEE 24B

24

BOUNDARY LOYALTY 135M



PG1470717 BOUN 135M

POLLED JAN. 21, 2024

LFE STRATTON 3094F
S: **LFE LOYALTY 836H**
IPU 10D POCAHONTAS 117F

LFE TRIUMPH 816A
LFE RS AMBER 2140B
IPU RED DEPUTY 25C
IPU 105L POCAHONTAS 10D

KUNTZ SHERIFF 8A
D: **BOUNDARY TUMBLER 107D**
BOUNDARY TUMBLER 8B

KUNTZ MARSHALL 12Y
PEACOCK'S LI'L NETTIE 23Y
LFE RED CASINO 3036X
BOUNDARY TUMBLER 15X

ACT BW	ADJ WW	ADJ YW	CE	BW	WW	CSA Spring EPDs			MCE	MWW	CWT
YW	Milk										
104	694	1217	8.8	3.5	66.0	99.8	21.1	3.4	54.1	26.7	

This balanced, smooth made, fault free bull is the natural son of our donor Tumbler 107D. She's had stellar sons sell to Maxwell Simmentals, Corbin Selody, Mandan Lake Simmentals, Mike Winnichyn, and Tom Graham and 2 daughters in production. This bull is sneaky good, especially considering his reliable pedigree. Take a good look here.

HOMO POLLED

Dam:
Boundary Tumbler 107D



REF

WALKING HERDSIRE: DOUBLE BAR D MOTLEY 412C

BPTG1156461

RLD 412C

POLLED

JAN. 1, 2015

HARVIE JDF WALLBANGER 111X
S: SVS CAPTAIN MORGAN 11Z
 SUNNYVALLEY BLK JENNA 88U

KS BRAVADO P68
D: DOUBLE BAR D SARAI 9X
 KWA MS SF 105U

ACT BW	ADJ WW	ADJ YW	CE	BW	CSA Spring EPDs				
					WW	YW	Milk	MCE	MWW
81	735	1292	9.5	3.4	83.4	133.8	25.5	5.8	67.2

Motley had a sweet disposition, was sound, moderate framed, wide topped, good haired, easy fleshing and big bodied. He transmits all those traits time and again to his progeny. The foot structure on his progeny is flawless, which we feel is incredibly important in these times. Motley provides lots of performance, yet the ave. BW of his progeny is only 90 lbs and ave. gest. is only 280 days!
 HOMO POLLED / HETERO BLACK. Sire of Lots 25, 26, 27, 41.

25

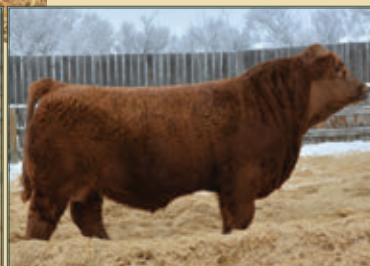
BOUNDARY RED MOTLEY 128M

Deep and long bodied, heavy haired, stylish, 128M has the eye-appeal that is typical of 232F's progeny. She is ideal in her make-up and passes her superb phenotype on to all her progeny. She's had 2 sons and 1 daughter that have been members of our show team. Her daughter is absolutely flawless in her design with exceptional teat size and placement. 232F had sons sell to Ryan Grindheim and Bonchuck Farms. When we bred her to "Motley", 128M is exactly the product we were hoping for. He has good performance EPDS TOP 10%YW, 20%WW, 30%MWWT. 128M not only has the look but the genes to be an elite breeding piece.

HOMO POLLED
TEST PENDING



Dam: Boundary Reggie 232F

Maternal Sister:
Boundary Reggie 51KMaternal Brother:
Boundary Sultan 165LMaternal Brother:
Boundary Rio Grande 72J

PG1470703

BOUN 128M

POLLED

JAN. 20, 2024

ACT BW	ADJ WW	ADJ YW	CE	BW	WW	CSA Spring EPDs				
						YW	Milk	MCE	MWW	CWT
108	750	1363	3.9	7.0	88.4	139.1	25.6	1.1	69.8	41.6

SVS CAPTAIN MORGAN 11Z
S: DOUBLE BAR D MOTLEY 412C
 DOUBLE BAR D SARAI 9X

BOUNDARY ESQUIRE 6C
D: BOUNDARY REGGIE 232F
 BOUNDARY REGGIE 57B

HARVIE JDF WALLBANGER 111X
 SUNNYVALLEY BLK JENNA 88U
 KS BRAVADO P68
 KWA MS SF 105U

NUG ROYAL RED 324A
 BOUNDARY TUMBLER 15X
 KWA FLYF RED MOUNTAIN 16Z
 BOUNDARY REGGIE 2X

26

BOUNDARY RED MOTLEY 32M



Dam:
Boundary Marigold 113F



PG1470659

BOUN 32M

POLLED

JAN. 7, 2024

SVS CAPTAIN MORGAN 11Z
S: DOUBLE BAR D MOTLEY 412C
 DOUBLE BAR D SARAI 9X

KWA FLYF RED MOUNTAIN 16Z
D: BOUNDARY MARIGOLD 113F
 BOUNDARY MARIGOLD 198D

HARVIE JDF WALLBANGER111X
 SUNNYVALLEY BLK JENNA 88U
 KS BRAVADO P68
 KWA MS SF 105U

IPU RED WESTERN 49X
 KWA MS ROCK 14X
 KUNTZ SHERIFF 8A
 BOUNDARY MARIGOLD 29W

ACT BW	ADJ WW	ADJ YW	CE	BW	WW	CSA Spring EPDs				
						YW	Milk	MCE	MWW	CWT
99	655	1207	7.9	4.3	78.1	122.3	25.9	4.5	64.9	42.2

Super sound, great foot and leg structure, awesome, dark red coat, just like his dam. His impressive, big volume, long bodied, powerful, nice uddered dam, refuses to give us a daughter, but had sons sell to Carmichael Farming, Dahl Farms, and John Howe. 32M has EPDS TOP- 25%DOC, 30%YW and has the typical good natured "Motley" disposition.

HOMO POLLED

27

BOUNDARY RED MOTLEY 103M



Great Granddam:
Kimlake Tumbler 834U



PG1470691

BOUN 103M

POLLED

JAN. 17, 2024

SVS CAPTAIN MORGAN 11Z
S: DOUBLE BAR D MOTLEY 412C
 DOUBLE BAR D SARAI 9X

BGS/BM CAPTAIN SCREAM 63D
D: BOUNDARY TUMBLER 38H
 BOUNDARY TUMBLER 158A

HARVIE JDF WALLBANGER111X
 SUNNYVALLEY BLK JENNA 88U
 KS BRAVADO P68
 KWA MS SF 105U

SVS CAPTAIN MORGAN 11Z
 RF SCREAM 215Z
 SPRINGCREEK WALK THE LINE
 KIMLAKE TUMBLER 834U

ACT BW	ADJ WW	ADJ YW	CE	BW	WW	CSA Spring EPDs				
						YW	Milk	MCE	MWW	CWT
92	696	1264	6.8	4.7	83.7	123.7	26.1	4.2	68.0	38.6

Balanced in his body, wide topped and dark red. Dam is a bigger framed "Scream" daughter with a good "Outlaw" 3-year-old in herd. Grandam Tumbler 158A has a son in the sale Lot 47. 103M has EPDS TOP 30%WW & YW and should sire the right kind, having been sired by "Motley".

HOMO POLLED

28

BOUNDARY TYCOON 207M



This dark red Tycoon son has so much stretch, is smooth made, and attractive in his design. It was pretty cool when he and his dam were crowned Champion Cow with bull calf last fall at the SCPS as 139H was Champion at side of her dam as a calf as well. A great cow that hates pictures. 139H has a maternal Sister with a son in the sale that has also won that show Lot 19. Dam also has 2 daughters in production, one with a feature son in the sale Lot 30. 207M ranked 1st of the red bulls for AWW, WADG, WWPDA, YWPDA, 2nd AYW, 5th WW & YW. He has EPDS TOP 1%WW, YW, & MWWT, 30%MILK. He has the numbers and the pedigree to do some impressive things.

HOMO POLLED

Dam: Boundary Natalia 139H

Sire to Lots 28 & 29:
SVS Tycoon 841FMaternal Granddam to Lots 28 & 19:
MMP Red Rizzle 396BMaternal Sister to Dam of Lots 28 & 19:
Boundary Natalia 88E

PG1470796

BOUN 207M

POLLED

FEB. 7, 2024

SVS BROOKS 669D
S: **SVS TYCOON 841F**
SVS RED ANNIE 411BMRL RED WHISKEY 101B
SVS RED SARA 92X
ACS EVERREADY 970W
3D MISS RED NOREMAC 211U

ACT BW	ADJ WW	ADJ YW	CE	BW	WW	CSA Spring EPDs		MCE	MWW	CWT
						YW	Milk			
98	831	1455	4.5	5.6	105.1	155.4	29.5	2.1	82.1	38.1

BOUNDARY RED ENTICER 82C
D: **BOUNDARY NATALIA 139H**
MMP RED RIZZLE 396BSKORS RED ENTICER 48Z
KIMLAKE TUMBLER 834U
LRX THE GODFATHER 141Z
MMP NATALIA 796Y

29

BOUNDARY TYCOON 158M

Dam:
Boundary Reggie 156D

PG1470790

IJS 158M

POLLED

JAN. 25, 2024

SVS BROOKS 669D
S: **SVS TYCOON 841F**
SVS RED ANNIE 411BMRL RED WHISKEY 101B
SVS RED SARA 92X
ACS EVERREADY 970W
3D MISS RED NOREMAC 211UNUG ROYAL RED 324A
D: **BOUNDARY REGGIE 156D**
BOUNDARY REGGIE 8TLFE BLACK LAKOTA 385W
TRIPILE C SMARTY PANTS R
KS BRAVADO P68
VIRGINIA MS POLL REGGIE

ACT BW	ADJ WW	ADJ YW	CE	BW	WW	CSA Spring EPDs		MCE	MWW	CWT
						YW	Milk			
103	689	1182	5.9	4.3	84.7	121.2	23.6	4.5	66.0	20.1

If I told you we were hoping for a bull out of the Tycoon x Reggie 156D mating, I'd be lying. Nevertheless, the daughters out of this bull should be second to none. His dam, at 9 years old, is one of the first cows people find in our herd. She's been crowned Champion, many a time. 156D had sons sell to Brett Callin and Dahl Farms. 2 daughters in herd. Granddaughter with feature son in the sale Lot 33. Looking to keep replacements? Few bulls are better equipped.

HETERO POLLED

30

BOUNDARY CAN-AM 80M



HEIFER BULL. One of our favorite heifer bull prospects to date. Impressive from every angle - small attractive skull, sound in his foot and leg structure, heavy haired, smooth made, and quiet in disposition. His 2-year-old dam weaned off 62% of her body weight with 80M. She is a nice, moderate, fault free cow. Grandam 139H and great Grandam 396B are both many time show winners. Grandam 139H has a feature son in the sale Lot 28. 80M is bred calving ease both top and bottom, with "Epic" and "Can-Am" in his pedigree. He had a birth weight of 78lbs and EPDS TOP 10%CE, YW, & MWWT, 15%BW, 20%WW, MILK, & MCE, 30%DOC. Above average for almost all EPDs. He is the right kind. He'll work well on heifers but is also good enough to provide a great calf crop on mature cows.

HOMO POLLED

BOUNDARY RANCH



Dam: Boundary Natalia 175K



Sire: KWA Can-Am 123H

Maternal Granddam:
Boundary Natalia 139HMaternal Sister to Granddam:
Boundary Natalia 63D

PG1470677

BOUN 80M

POLLED

JAN. 15, 2024

ACT BW	ADJ WW	ADJ YW	CE	BW	WW	CSA Spring EPDs		MCE	MWW	CWT
						YW	Milk			
78	749	1319	13.6	1.0	87.6	136.4	31.5	6.0	75.3	39.9

MRL STATEMENT 3F
S: KWA CAN-AM 123H
KWA MS ROCK 14X

R PLUS VENOM 4006B
MRL MISS 6600D
KWA RED ROCK 5T
KWA MS BARON 9U

WS EPIC E152
D: BOUNDARY NATALIA 175K
BOUNDARY NATALIA 139H

WS ALL ABOARD B80
WS MAJESTIC Z133
BOUNDARY RED ENTICER 82C
MMP RED RIZZLE 396B

31

BOUNDARY CAN-AM 89M

Dam:
Boundary Legacy 37K

PG1470682

BOUN 89M

POLLED

JAN. 16, 2024

MRL STATEMENT 3F
S: KWA CAN-AM 123H
KWA MS ROCK 14X

R PLUS VENOM 4006B
MRL MISS 6600D
KWA RED ROCK 5T
KWA MS BARON 9U

KWA WESTERN ALLIANCE 400G
D: BOUNDARY LEGACY 37K
BOUNDARY LEGACY 75H

CCLT ALLIANCE 91C
BBN MISS SMARTY 400D
WHEATLAND RED EXPRESS 890F
LWC MISS LEGACY 286B

ACT BW	ADJ WW	ADJ YW	CE	BW	WW	CSA Spring EPDs		MCE	MWW	CWT
						YW	Milk			
70	734	1304	15.2	-1.0	73.5	109.4	32.9	6.6	69.7	31.2

HEIFER BULL. Another good calving ease prospect typical of the Can-Am sired progeny here. Nicely balanced, good hair coat, sound structure, and round hip. His moderate framed, big volume dam is bred calving ease as well, sired by "Alliance". She weaned off 64% of her body weight with 89M. Grandam is 75H- if you've seen her in person, you'll damn sure remember her. 89M had a birth weight of 70 lbs., 283-day gestation. and EPDS TOP 2%BW, 3%CE, 15%MILK, & MCE, 25% MWWT. **HOMO POLLED**

REF

WALKING HERDSIRE: BOUNDARY GREAT WESTERN 151G

PG1275853

BOUN 151G

POLLED

JAN. 28, 2019

SAS T101 SWEET MEAT

KUNTZ SUPER DUTY 4Y

S: BOUNDARY SWEET MEAT 51B D: WHS CAMILLE 83C

BOUNDARY READY2TANGO 22X

JF LATISHA 9014W

ACT BW	ADJ WW	ADJ YW	CE	BW	CSA Spring EPDs				
					WW	YW	Milk	MCE	MWW
86	682	1202	11.8	2.2	79.6	108.2	21.0	4.7	60.8

Chosen to replace our Walking Hersire Sweet Meat 51B, Great Western may supersede his Sire. Backed by some beautiful cows, his dam was purchased at CWA from Hannah Simmentals. She has given us 3 excellent daughters. 151G progeny have ave. gest. of 286 days, BW 88 lbs. His progeny display his overall thickness, depth of rib, heart, and performance.

HOMO POLLED. Sire of Lots 32 to 38.



DAM



SIRE



GRANDDAM



32

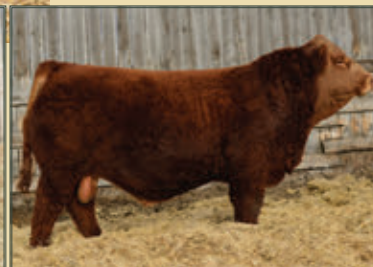
BOUNDARY GREAT WESTERN 194M

Here is a bull that is easy to appreciate from every angle, out of a cow that not only never missed, she always had a top calf. Sadly we lost Sarah a few days after she calved. She's had sons sell to Nolaria Farms and produced Formidable himself, who was sold to Percyview Farms. Formidable is one of our favorite bulls that we have ever sold and is used heavily in our AI program now to add performance. Sarah has 5 daughters in herd, including 203G, who had a high selling bull for us a few years ago and 35K who has a son in the sale Lot 40. 194M has EPDS TOP 15%YW & DOC, 20%WW, 30%CE. He's a liver red, good haired, good natured, tank of a bull, that will be easy to find sale day.

HOMO POLLED



Dam: Boundary Sarah 62A

Maternal Granddam:
Boundary Sarah 19YMaternal Brother:
Boundary Formidable 52FMaternal Brother:
Boundary Capone 26D

PG1470793

BOUN 194M

POLLED

FEB. 3, 2024

ACT BW	ADJ WW	ADJ YW	CE	BW	WW	CSA Spring EPDs				
						YW	Milk	MCE	MWW	CWT
93	761	1385	10.4	3.3	86.6	133.6	22.1	4.4	65.4	42.8

BOUNDARY SWEET MEAT 51B

S: BOUNDARY GREAT WESTERN 151G

WHS CAMILLE 83C

SAS T101 SWEET MEAT

BOUNDARY READY2TANGO 22X

KUNTZ SUPER DUTY 4Y

JF LATISHA 9014W

TESS BLACK RAMPAGE 71W

D: BOUNDARY SARAH 62A

BOUNDARY SARAH 19Y

WHEATLAND BULL 786T

ACS RED TEDDY 657S

TCF/RCC TEMPTATION GJ640

BOUNDARY SILKY SARAH 6U

33

BOUNDARY GREAT WESTERN 87M



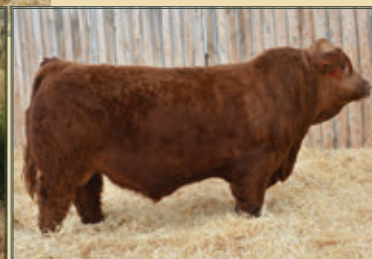
Hard to believe this big framed, tank of a bull started out at a mere 79lbs, he's gone on to be one of the highest performing bulls in the pen. Ranked 1st of the red bulls for AYW & YADG, 3rd WW & YW, 4th YWPDA, 5th WADG, with curve bending EPDs from birth to performance TOP 5%BW, 10%CE, 15%YW & MCE, 20% STAY, 25%WW, MWWT, & DOC. His dam was Champion at the SCPS 2022, with our high selling bull in last year's sale to Ruzika Farms Ltd. at side. Dam and grandam are heavy milking, super sound cows. They go back to the 156D cow that was Bella's first 4H project. The pair had a very successful show career. She is still a visitor favorite at 9 years old. If you're looking for calving ease, performance, and maternal, then this big docile bull is the one.

HOMO POLLED

BOUNDARY RANCH



Dam: Boundary Reggie 37H

Maternal Granddam:
Boundary Reggie 143FMaternal Great Granddam:
Boundary Reggie 156DMaternal Brother:
Boundary Express 242L

PG1470680

IJS 87M

POLLED

JAN. 16, 2024

ACT BW	ADJ WW	ADJ YW	CE	BW	WW	CSA Spring EPDs				
						YW	Milk	MCE	MWW	CWT
79	781	1456	14.1	0.0	85.4	132.4	28.2	7.4	70.9	37.6

BOUNDARY SWEET MEAT 51B
S: **BOUNDARY GREAT WESTERN 151G**
WHS CAMILLE 83C

CIRCLE G CASH 1C
D: **BOUNDARY REGGIE 37H**
BOUNDARY REGGIE 143F

SAS T101 SWEET MEAT
BOUNDARY READY2TANGO 22X
KUNTZ SUPER DUTY 4Y
JF LATISHA 9014W

KWA FLYF RED MOUNTAIN 16Z
SWAN LAKE NO SECRET 76A
MRL RENEGADE 93D
BOUNDARY REGGIE 156D

34

BOUNDARY GREAT WESTERN 245M

Dam:
Boundary Reggie 106H

PG1470801

BOUN 245M

POLLED

FEB. 25, 2024

BOUNDARY SWEET MEAT 51B
S: **BOUNDARY GREAT WESTERN 151G**
WHS CAMILLE 83C

IPU 56U RED LINER 215A
D: **BOUNDARY REGGIE 106H**
VIRGINIA MS POLL REGGIE

SAS T101 SWEET MEAT
BOUNDARY READY2TANGO 22X
KUNTZ SUPER DUTY 4Y
JF LATISHA 9014W

SPRINGCREEK LINER 56U
NUG ABBEY GAL 956W
IPU THE RED MILE 12N
VIRGINIA MS. NUTMEG 52N

ACT BW	ADJ WW	ADJ YW	CE	BW	WW	CSA Spring EPDs				
						YW	Milk	MCE	MWW	CWT
91	795	1342	9.6	2.4	75.1	107.5	24.9	5.3	62.5	22.1

Our youngest bull in the sale but definitely earned a well-deserved spot in it. These Great Western calves are easy to spot. His dam is an ET daughter of the Reggie 110R donor. She had a feature son in last year's sale go to Daines Simmentals, who was a member of our pen of bulls for MHPS. 245M had a gestation of 283 days, dam's average is 281 on 4 calves. He has good performance ranking 3rd of the red bulls for WWPDA, 4th WADG, 5th AWW and EPDS TOP 10%STAY, 30%BW & DOC. **HOMO POLLED**

35

BOUNDARY GREAT WESTERN 172M



172M carries the capacity, width of top, and overall quality that the Kendra family is known for. 247F is very similar in type to 172M's grandam, good old 71W- tremendous volume and overall width - top to bottom. 247F has a very nice 2-year-old full sib daughter to 172M in herd. 172M proudly displays all the best traits that Great Western reliably transmits to his calves - the depth of chest, rib, and length. A really good bull with a pretty average picture.

HOMO POLLED



Dam: Boundary Kendra 247F



Maternal Granddam:
Springcreek Kendra 71W



Sire of Dam: Boundary Esquire 6C



Maternal Sister to Dam:
Boundary Kendra 28C

PG1470792

BOUN 172M

POLLED

JAN. 27, 2024

BOUNDARY SWEET MEAT 51B
S: **BOUNDARY GREAT WESTERN 151G**
WHS CAMILLE 83C

SAS T101 SWEET MEAT
BOUNDARY READY2TANGO 22X
KUNTZ SUPER DUTY 4Y
JF LATISHA 9014W

ACT BW	ADJ WW	ADJ YW	CE	BW	WW	CSA Spring EPDs		MCE	MWW	CWT
						YW	Milk			
93	716	1279	10.1	3.2	72.4	97.5	22.8	4.5	59.0	20.9

BOUNDARY ESQUIRE 6C
D: **BOUNDARY KENDRA 247F**
SPRINGCREEK KENDRA 71W

NUG ROYAL RED 324A
BOUNDARY TUMBLER 15X
TNT GUNNER N208
SPRINGCREEK RED TARA 77T

36

BOUNDARY GREAT WESTERN 226M



Dam:
Boundary Sweet Marie 50J



PG1470799

BOUN 226M

POLLED

FEB. 14, 2024

BOUNDARY SWEET MEAT 51B
S: **BOUNDARY GREAT WESTERN 151G**
WHS CAMILLE 83C

SAS T101 SWEET MEAT
BOUNDARY READY2TANGO 22X
KUNTZ SUPER DUTY 4Y
JF LATISHA 9014W

DOUBLE BAR D MOTLEY 412C
D: **BOUNDARY SWEET MARIE 50J**
BOUNDARY SWEET MARIE 62Y

SVS CAPTAIN MORGAN 11Z
DOUBLE BAR D SARAI 9X
KNK/CRSR RED BULL 53T
KIMLAKE MARIE 840U

ACT BW	ADJ WW	ADJ YW	CE	BW	WW	CSA Spring EPDs		MCE	MWW	CWT
						YW	Milk			
104	828	1364	6.8	5.0	90.3	130.5	21.6	3.0	66.8	33.4

A younger Great Western calf that just keeps getting better. His Motley sired dam is an absolute gem and was a member of our show team as a calf. She had a son in last year's sale sell to Sara Huber. 226M ranked 2nd of the red bulls for AWW & WWPDA and has EPDS TOP 15%WW & DOC, 20%YW.

HOMO POLLED/SIRE VERIFIED

37

BOUNDARY BLACK WESTERN 76M



Maternal Granddam:
Boundary Storm 70X



BPG1470675

BOUN 76M

POLLED JAN. 15, 2024

BOUNDARY SWEET MEAT 51B
S: BOUNDARY GREAT WESTERN 151G
WHS CAMILLE 83C

MRL MISSILE 138C
D: BOUNDARY STORM 94J
BOUNDARY STORM 70X

SAS T101 SWEET MEAT
BOUNDARY READY2TANGO 22X
KUNTZ SUPER DUTY 4Y
JF LATISHA 9014W

COME AS U R RED ROCKET
MRL MISS 2423Z
REMINGTON ON TARGET 2S
BOUNDARY STORM 13T

ACT BW	ADJ WW	ADJ YW	CE	BW	WW	CSA Spring EPDs				
						YW	Milk	MCE	MWW	CWT
95	741	1410	9.9	4.1	90.8	132.9	23.8	3.3	69.2	35.9

A bull that has a natural overall mass and thickness that is easy to admire. Hot damn is this bull heavy muscled, a quarter that carries all the way down into his twist. Dam is a big, powerful, ET daughter of the Storm 70X cow and Missile. 76M ranked 1st of the black bulls for AYW, 2nd YADG, 4th YWPDA, 5th YW and has EPDS TOP 2%DOC, 10%WW, 15%YW, 30%MWWT, 35%STAY. He's been doing a lot of growing the last few months, and it shows in his performance. **HOMO POLLED / HETERO BLACK**

38

BOUNDARY BLACK WESTERN 24M



Dam:
Boundary Tango 28H



BPG1470657

BOUN 24M

POLLED JAN. 6, 2024

BOUNDARY SWEET MEAT 51B
S: BOUNDARY GREAT WESTERN 151G
WHS CAMILLE 83C

LFE BEAST MODE 305D
D: BOUNDARY TANGO 28H
BOUNDARY TANGO 104B

SAS T101 SWEET MEAT
BOUNDARY READY2TANGO 22X
KUNTZ SUPER DUTY 4Y
JF LATISHA 9014W

LFE BS LEWIS 420B
LFE BS OPAL 630X
MR HOC BROKER
LFE READY TO TANGO 609S

ACT BW	ADJ WW	ADJ YW	CE	BW	WW	CSA Spring EPDs				
						YW	Milk	MCE	MWW	CWT
95	652	1190	9.4	3.4	72.9	103.6	19.7	3.8	56.2	19.9

A balanced, black Great Western calf. Dam was Isabella's 4H project for 3 years where she went undefeated. Beautiful, moderate framed, perfect uddered, baldie female with a ridiculous amount of hair. She had a son sell to Pouteaux Cattle Company LTD., and has one 2 year old daughter in herd. **HOMO POLLED / HETERO BLACK**

39

BOUNDARY BLACK EXPRESS 9M



Dam:
Boundary Abricot 57G



BPG1470655

BOUN 9M

POLLED JAN. 1, 2024

WHEATLAND EXCHANGE 6139D
S: WHEATLAND RED EXPRESS 890F
WHEATLAND LADY 212Z

DOUBLE BAR D MOTLEY 412C
D: BOUNDARY ABRICOT 57G
BOUNDARY ABRICOT 5B

PROFIT
WHEATLAND LADY 913W
WHEATLAND STOUT 930W
WHEATLAND LADY 93X

SVS CAPTAIN MORGAN 11Z
DOUBLE BAR D SARAI 9X
LFE BS LEWIS 322U
KIMLAKE ABRICOT 511R

ACT BW	ADJ WW	ADJ YW	CE	BW	WW	CSA Spring EPDs				
						YW	Milk	MCE	MWW	CWT
86	652	1183	10.7	1.8	62.2	87.8	26.3	4.9	57.4	16.5

We lost Express last spring, so this stretchy, docile, heavy haired, bull is special. Dam was Mackayla's "covid" 4H Heifer, she is super thick, correct, and has the typical Motley foot structure. She has a stunning 2 yr old "Great Western" daughter that was part of our show string last year. Grandam 5B was a donor for us. 9M has EPDS TOP 25%CE & BW.

HETERO POLLED / HETERO BLACK

40

BOUNDARY STATE OF WAR 84M

BPG1470679

BOUN 84M

POLLED

JAN. 15, 2024

WELSH'S WARSAW 312Z

S: HART STATE OF WAR 056C

HART MISS 102A

DOUBLE BAR D MOTLEY 412C

D: BOUNDARY SARAH 35K

BOUNDARY SARAH 62A

FBFS WARSAW 068W

WELSHS ROSIE 102W

SKORS BLACK ENTICER 287Y

HART MISS X534

SVS CAPTAIN MORGAN 11Z

DOUBLE BAR D SARAI 9X

TESS BLACK RAMPAGE 71W

BOUNDARY SARAH 19Y

ACT BW	ADJ WW	ADJ YW	CE	BW	WW	CSA Spring EPDs				
						YW	Milk	MCE	MWW	CWT
75	723	1293	15.1	0.4	84.5	131.2	26.0	8.8	68.3	42.1

HEIFER BULL. Smooth made, balanced, good haired bull. Dam is a daughter of Sarah 62A (feature son in sale lot 32), 62A's production has been outstanding, she is also the dam of "Formidable" (2 sons in the sale Lots 21 & 22). 84M had a birth weight of 75 lbs. and a gestation of only 278 days. 35K's 2nd calf was 280 days and 72lbs. His EPDs back up his calving ease status - TOP 3%CE, 5%MCE, 10%BW, 20%YW & DOC, 25%WW & STAY, so we feel 84M will be a sleep-easy heifer bull. **HOMO POLLED/ HETERO BLACK**

Dam:
Boundary Sarah 35K



41

BOUNDARY MOTLEY 140M

BPG1470788

BOUN 140M

POLLED

JAN. 22, 2024

SVS CAPTAIN MORGAN 11Z

S: DOUBLE BAR D MOTLEY 412C

DOUBLE BAR D SARAI 9X

BOUNDARY SUPERIOR 122Y

D: BOUNDARY TANGO 232D

BOUNDARY TANGO 28Z

HARVIE JDF WALLBANGER 11X

SUNNYVALLEY BLK JENNA 88U

KS BRAVADO P68

KWA MS SF 105U

MR NLC SUPERIOR S6018

LFE READY TO TANGO 609S

OLF ODIN U5

BOUNDARY READY2TANGO 22X

ACT BW	ADJ WW	ADJ YW	CE	BW	WW	CSA Spring EPDs				
						YW	Milk	MCE	MWW	CWT
87	690	1248	13.0	0.5	71.1	107.7	29.0	7.0	64.6	35.4

Smooth made, nice haired, Motley son. His dam has 3 daughters in herd with the same strong udder structure and milk production as her. She's had sons sell to Kevin Banman and Sawki Ranch. 140M was 87 lbs and had a 277-day gestation out of a mature cow that is a proven heifer bull producer. Her average birth weight on 7 calves is 84lbs bw and gestation is 278 days. His EPDs back up his calving ease status - TOP 10%CE & BW, 20%MCE. **HOMO POLLED / HETERO BLACK.**

Dam:
Boundary Tango 232D



42

BOUNDARY BLK LOYALTY 199M

BPG1470794

BOUN 199M

POLLED

FEB. 5, 2024

LFE STRATTON 3094F

S: LFE LOYALTY 836H

IPU 10D POCAHONTAS 117F

SAS T101 SWEET MEAT

D: BOUNDARY MARIGOLD 82B

MISS TEE 41R

LFE TRIUMPH 816A

LFE RS AMBER 2140B

IPU RED DEPUTY 25C

IPU 105L POCAHONTAS 10D

HTP SVF IN DEW TIME

SAS SWEETS STAR R101

WHEATLAND BULL 238M

MISS TEE 139M

ACT BW	ADJ WW	ADJ YW	CE	BW	WW	CSA Spring EPDs				
						YW	Milk	MCE	MWW	CWT
89	687	1199	7.3	3.2	59.9	86.6	25.0	3.1	55.0	18.9

Smooth shouldered, tidy made, super cool baldie bull, with a nice, quiet disposition. His dam has 2 daughters in herd, one being 172G who had our high selling bull in 2023 to L.P Farms. 82B also had a son go to Percyview Stock Farm. 199M had a low 89lbs birth weight out of a mature cow with an average birth weight of 87 lbs on 8 calves. He has EPDS TOP 10% DOC, 20%STAY. Calving ease bull with a pretty neat look.

HETERO POLLED / HETERO BLACK

Dam:
Boundary Marigold 82B



43

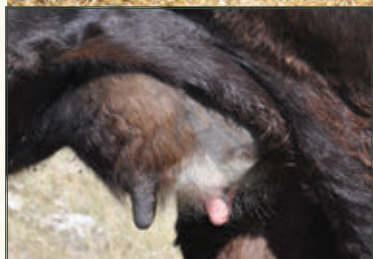
BOUNDARY NIGHT HAWK 34M



Power bull that goes on for miles, round hip that carries down deep, clean in his lines, 34M was the heaviest bull at weaning. His moderate framed, heavy milking dam had sons sell to Coralta Farms and a really cool "Dream On" son go to Calvin Dahl in last year's sale. She has one daughter in production. Grandam is the 171Z cow that has put more than a few high sellers through this sale. 34M ranked 1st of the black bulls for WW, AWW, WADG, WWPDA, YW, 2ND YWPDA, 3RD AYW, 5TH YADG. EPDS TOP 2%DOC, 15%YW, 25%WW. Big time performance bull with a pretty neat phenotype.

HOMO POLLED
HETERO BLACK

BOUNDARY RANCH



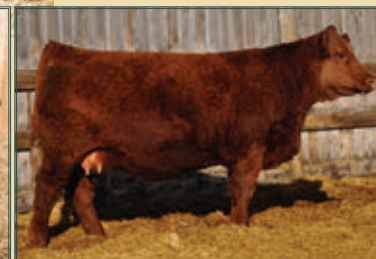
Udder Quality of Dam:
Boundary Black Reggie 130C



Sire: LFE Night Hawk 3013D



Maternal Granddam:
Boundary Black Reggie 171Z



Maternal Great Granddam:
Boundary Reggie 2X

BPG1470660

BOUN 34M

POLLED

JAN. 7, 2024

ACT BW	ADJ WW	ADJ YW	CE	BW	WW	CSA Spring EPDs			MWW	CWT
						YW	Milk	MCE		
98	809	1395	8.6	4.5	86.3	134.5	21.5	-0.8	64.7	37.4

LFE TRIUMPH 816A

S: LFE NIGHT HAWK 3013D

LFE RRS CIARA 2158Z

LFE BEER MONEY 811Y

LFE BISS BS SUNSHINE 609X

LFE PUNK 407U

RRS OBSESSION 87T

3D BLK FULL THROTTLE 483X

D: BOUNDARY BLK REGGIE 130C

BOUNDARY REGGIE 171Z

WHEATLAND BULL 680S

CROSSROAD RAMONA 375R

SPRINGCREEK WALK THE LINE

BOUNDARY REGGIE 2X

44

BOUNDARY WALK THIS WAY 53M



Dam:
Boundary Tango 11E



BPG1470668

BOUN 53M

POLLED

JAN. 10, 2024

NCB COBRA 47Y

S: MADER WALK THIS WAY 224B

MADER P IRON SUGAR 7X

LFE VIPER 455U

NCB MISS DREAM 22T

MADER P BLACK IRONMAN 22U

LFE FAMOUS 632T

TNGL GRAND FORTUNE Z467

D: BOUNDARY TANGO 11E

BOUNDARY TANGO 104B

SS EBONYS GRANDMASTER

AJE/HS/MBCC HOPE FLOATS

MR HOC BROKER

LFE READY TO TANGO 609S

ACT BW	ADJ WW	ADJ YW	CE	BW	WW	CSA Spring EPDs			MWW	CWT
						YW	Milk	MCE		
103	673	1391	6.7	4.0	89.7	145.7	22.6	6.5	67.5	34.8

This stout made "Walk This Way" son is one of the hairiest Simmental bulls we've raised. He profiles similar to his beautiful, front pasture "Grand Fortune" Dam, both appear to have some extra ribs! 11E had sons sell to Jensen Simmental and Nicholson Farms. She has 2 daughters in herd that are carbon copies of her. 53M ranked 1st of the black bulls for YADG, 4th YW, 5th AYW and has EPDS that support those numbers - TOP 4%YW, 15%WW, 20%MCE, 25%STAY & DOC.

HETERO POLLED / HETERO BLACK

45

BOUNDARY DYNASTY 167M



I've loved this bull since weaning so I tried to make a pen of bulls around him for Medicine Hat, but was out voted by the blonde kid. Everything about this guy screams herd bull, from his level, big top, great hair, quiet demeanor, to his round hip, and attractive skull. His dam weaned off 61% of her body weight with 167M. She had a son that was part of our show team that sold to Sandstone Farms Ltd in last year's sale. 167M had an 88 lbs birth weight and gestation of only 279 days out of a mature cow. Dam's average is 78 lbs. and 279 days on 4 calves. He ranked 1st of the black bulls for YWPDA, 2nd AWW, WADG, & WWPDA, 4th WW, AYW, YADG, 5th for YW and has EPDS TOP 10%DOC, 20%WW, 25%BW & YW, 30%CE. Great numbers, great pedigree, wicked bull.

HOMO POLLED
HETERO BLACK



Dam: Boundary Camille 44G



Sire of Lots 45 & 46:
SVS Dynasty 9150G



Great Granddam: WHS Camille 83C



Maternal Brother:
Boundary Blk Great Western 29L

BPG1470791

BOUN 167M

POLLED

JAN. 27, 2024

RF CAPACITY 742E
S: **SVS DYNASTY 915G**
WFL RED SAGE 506C

ACT BW	ADJ WW	ADJ YW	CE	BW	WW	CSA Spring EPDs				
						YW	Milk	MCE	MWW	CWT
88	785	1393	10.6	2.0	87.4	125.2	20.0	6.0	63.7	36.2

CCR COWBOY CUT 5048Z
D: **BOUNDARY CAMILLE 44G**
BOUNDARY CAMILLE 62E

WFL WESTCOTT 24C
RF FAMOUS 409B
R PLUS RELOAD 2006Z
WFL RED SAGE 1003Y

TRIPLE C SINGLETARY S3H
CCR MS 4045 TIME 7322T
BEE IGNITE 71C
WHS CAMILLE 83C

46

BOUNDARY DYNASTY 118M



BPG1470700

BOUN 118M

POLLED

JAN. 19, 2024

RF CAPACITY 742E
S: **SVS DYNASTY 915G**
WFL RED SAGE 506C

WS PROCLAMATION E202
D: **BOUNDARY TANGO 18H**
BOUNDARY TANGO 14C

WFL WESTCOTT 24C
RF FAMOUS 409B
R PLUS RELOAD 2006Z
WFL RED SAGE 1003Y

CCR COWBOY CUT 5048Z
WS MISS SUGAR C4
NCB COBRA 47Y
BOUNDARY TANGO 135A

ACT BW	ADJ WW	ADJ YW	CE	BW	WW	CSA Spring EPDs				
						YW	Milk	MCE	MWW	CWT
103	734	1216	7.5	4.3	86.7	120.5	21.2	5.9	64.6	32.2

Wide based, moderate, good haired, "Dynasty" son out of a very nicely put together "Proclamation" daughter hailing from our Tango cow family. Grandam was a tank of a cow with some very showy progeny. 118M ranked 5th of the black bulls for WW and has EPDS TOP 25%WW & DOC.

HOMO POLLED / HETERO BLACK



Dam:
Boundary Tango 18H

47

BOUNDARY MANDATE 44M

BPG1470663

BOUN 44M

POLLED

JAN. 8, 2024

R PLUS YUMA 9087G

S: R PLUS MANDATE 1044J

MISS R PLUS 4193B

SPRINGCREEK WALK THE LINE

D: BOUNDARY TUMBLER 158A

KIMLAKE TUMBLER 834U

R PLUS 5015C

MISS R PLUS 3007A

R PLUS BLACKEDGE

LFE BS DAKOTA COAL 610P

RCC/TCF LINE DRIVE M181

MJ BLACK JUST CAUSE 204P

TNT GUNNER N208

KIMLAKE TUMBLER 550R

ACT BW	ADJ WW	ADJ YW	CE	BW	WW	CSA Spring EPDs				
						YW	Milk	MCE	MWW	CWT
97	777	1350	7.2	3.9	78.4	118.6	29.2	4.0	68.5	33.1

Long bodied, bigger framed, good natured, Mandate sired bull. Dam had a daughter sell to Crossroad Farms at Simmsational, 4 impressive daughters in production and sons sell to Mike Winnichyn and Eview Farming. Grandam is Donor Tumbler 834U who has put a few high sellers through this sale. 44M ranked 2nd of the black bulls for WW, 3rd for AWW, WADG, WWPDA, & YW, 5th for YWPDA and has EPDS TOP 15%DOC, 25%STAY.

HETERO POLLED / HETERO BLACK

Dam:
Boundary Tumbler 158A



48

BOUNDARY MANDATE 60M

Deeper bodied, strong topped, bigger framed Mandate son. His big, impressive dam doesn't look like she should be a short gestation cow, but she certainly is - her average is 276 days, (60M was 277). She's had a son sell to Sawki Ranch Ltd. and 2 daughters are in production. 60M ranked 2nd of the black bulls for YW & AYW, 3rd WW, YADG, & YWPDA, 4th AWW, WADG, WWPDA and has EPDS TOP 10%CE & BW, 20%MCE, 25%YW. Looking to add some frame and performance, look no further.

**HETERO POLLED
HOMO BLACK**

Dam: Boundary Black Calyna 217C



Sire: R Plus Mandate 1044J



Maternal Brother to Dam:
Boundary Proclamation 51H



Maternal Brother:
Boundary Riddler 24G

BPG1470672

BOUN 60M

POLLED

JAN. 12, 2024

R PLUS YUMA 9087G

S: R PLUS MANDATE 1044J

MISS R PLUS 4193B

R PLUS 5015C

MISS R PLUS 3007A

R PLUS BLACKEDGE

LFE BS DAKOTA COAL 610P

OLF ODIN US

BOUNDARY SARAH 110W

GWS EBONYS TRADEMARK 6N

BOUNDARY CALYNA 3Y

ACT BW	ADJ WW	ADJ YW	CE	BW	WW	CSA Spring EPDs				
						YW	Milk	MCE	MWW	CWT
91	757	1399	13.1	0.7	80.2	128.2	19.3	7.4	59.4	36.1

BOUNDARY VIKING 46A

D: BOUNDARY CALYNA 217C

BOUNDARY CALYNA 21A

SCHERGER RANCHING

Lane, Kacie, Andie & Millie Scherger
Box 1462, Swift Current, SK S9H 3X5

Lane: 306.750.2129
lanescherger@gmail.com

Welcome to the 16th Annual Showcase Bull Sale. It promises to be another exciting event, and we are grateful for your continued support and loyalty. We feel very fortunate to raise our family in the production of agriculture and the beef business. There has never been a more exciting time to be in the cattle industry, and there has never been a better time to invest in quality genetics to move your program forward.

This year's group of bulls has developed very well and are the result of many years of genetic selection. Sound, functional bulls that are backed by strong maternal cow families. Every year we receive compliments on the soundness of our bulls, and it is something we feel is very important. It is our focus that you are just as happy with the bull for years to come, as you are on sale day. Longevity is key!

We extend an invite to all who are able to attend on sale day, whether it is in person, online or on the phone. We would be happy to discuss the bulls with you prior to the sale to find the right fit for your operation, and bulls are available any time for viewing. Feel free to contact us or connect with our great sales team for further information. We look forward to seeing you on sale day.



49

LTS BELIEVE 4051M



A power bull that will attract a lot of attention on sale day. Long, deep and wide, with an awesome foot under him. He travels with a long easy stride, and has a ton of character and presence to him. For many, this pedigree offers a complete and total outcross to most mainstream red genetics, being out of two black parents. This will be one of the very first sons available off of the RF BOOMER bull that was the high seller from the Rancier program. He has left a tremendous set of calves that exhibit unmatched depth of body, spring of rib, overall mass and sound structure. His dam and grandam are two of our most impressive black cows. Both deep and broody, always bringing home a top calf, while maintaining strong feet and udders. The search is always on for a great outcross red power bull, and we feel he checks all the boxes. Significant opportunity here, take advantage.

**HOMO POLLED
NON DILUTOR**



Sire: RF Boomer 262K



Sire of Dam: Mader Pipestone 42E



Brother to Dam: Pipestone 67G



Maternal Brother: LTS Slash 3107L

PG1500743

LTS 51M

POLLED

JAN.8, 2024

ACT BW	ADJ WW	CE	BW	WW	CSA Spring EPDs YW	Milk	MCE	MWW	CWT
91	850	4.5	5.7	98.5	145.4	25.4	1.2	74.7	52.0

RF SHAKEDOWN 074H

S: RF BOOMER 262K

RF FLIRT 850F

MADER PIPESTONE 42E

D: LTS CROCUS TIA 34G

LTS CROCUS MS SAMBO 51A

NGDB STRUCTURE 34D

IPU MS. COWBOY CUT 135D

WFL WESTCOTT 24C

RF NOT JUST A FLIRT 404B

LFE HEAVY HITTER 352C

MADER GOODLUCK CHARM 139Y

EDN SAMBO 192S

TPP CROCUS MISS RED TIA

50

LTS BRIGADE 4080M

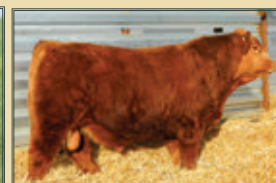


A real attractive bull that is clean through the neck and shoulder, wide over the top and full through the hip. He has great presence and character, making him easy to find when you enter the pen. He moves out freely with a long full stride, attributes we feel are very important. Combine this with him being out a very good uddered and appealing cow. She is a Westcott daughter, that always seem to raise calves with extra shape and muscle to them every time. A well-rounded herd sire prospect that will enhance any program.

HOMO POLLED



Sire: SVS Betts 808F



Maternal Brother:
LTS Velocity 2003K

PG1500747

LTS 80M

POLLED

JAN. 22, 2024

ACT BW	ADJ WW	CE	BW	WW	CSA Spring EPDs		MCE	MWW	CWT
					YW	Milk			
91	780	7.0	4.6	89.2	130.8	21.5	4.4	66.1	35.2

BGS/BM CAPTAIN SCREAM 63D
S: **SVS BETTS 808F**
WFL RED SAGE 506C

WFL WESTCOTT 24C
D: **TPP CROCUS WANDA 22F**
TPP CROCUS MS FORCE 1Y

SVS CAPTAIN MORGAN 11Z
RF SCREAM 215Z
R PLUS RELOAD 2006Z
WFL RED SAGE 1003Y
TNT 90 PROOF Z401
WFL SWEET LICIOUS 1044X
HOOKS SHEAR FORCE 38K
TPP CROCUS WANDA 4W

51

LTS BOOMER 4091M



If longevity and consistency are traits you place a high amount of value on, take a closer look. At 14 years of age, this bull's dam has proven herself many times over. She has raised many sons for the bull sale, with most of them having that great blaze face that will grab your attention. Her sons are consistently some of the highest performance bulls in the pen as well, and this bull is no exception. Hi WW & YW numbers support this as well, ranking him in the top 10 and 15 percent of the breed. Look to this powerful herd bull to add length, performance and that highly sought after blaze face.

**HOMO POLLED
NON DILUTOR**



Maternal Brother:
LTS Bond 26H



Maternal Brother:
LTS Enhance 78J

PG1500777

LTS 91M

POLLED

JAN. 28, 2024

ACT BW	ADJ WW	CE	BW	WW	CSA Spring EPDs		MCE	MWW	CWT
					YW	Milk			
102	786	3.5	7.4	92.0	134.5	25.3	1.5	71.3	42.2

RF SHAKEDOWN 074H
S: **RF BOOMER 262K**
RF FLIRT 850F

ACS BLACK JACK 758T
D: **TPP CROCUS MS JACKIE 7Y**
TPP CROCUS MS REZULT 48W

NGDB STRUCTURE 34D
IPU MS. COWBOY CUT 135D
WFL WESTCOTT 24C
RF NOT JUST A FLIRT 404B
WHEATLAND RED TEDDY 457P
WGAJ JONESY'S NEON 24N
DAY RED RESULT 9S
TPP CROCUS MAXINE 35M

52

LTS BETTS 4072M

PG1500733

LTS 72M

POLLED

JAN. 18, 2024

BGS/BM CAPTAIN SCREAM 63D

S: SVS BETTS 808F

WFL RED SAGE 506C

SVS CAPTAIN MORGAN 11Z

RF SCREAM 215Z

R PLUS RELOAD 2006Z

WFL RED SAGE 1003Y

MRL HIGH VOLTAGE 155X

D: TPP CROCUS MS VOLTAGE 35C

TPP CROCUS MS UNIQUE 13U

TNT POWER SURGE T404

MRL MISS 371T

MR ISHEE RED 600UNIQUE

TPP CROCUS BETTY 7L

ACT BW	ADJ WW	CE	BW	WW	CSA Spring EPDs				
					YW	Milk	MCE	MWW	CWT
71	754	9.7	1.8	78.7	115.8	23.2	7.6	62.6	27.6

Wide topped and stout, with a big hip and just a 71lb birthweight. His dam, who consistently produces lighter birthweight calves really clicked well here with the powerful Betts sire. The Betts cattle have been highly sought after in the breed, and for good reason. The sons always impress, and the daughters are really showing their strength as they move into production.

HOMO POLLED

Maternal Brother:
LTS Redford 2031K



53

LTS BOND 4059M

PG1500751

LTS 59M

POLLED

JAN. 13, 2024

MADER WALK THIS WAY 224B

S: SVS BOND 973G

CMS SODA POP 410B

NCB COBRA 47Y

MADER P IRON SUGAR 7X

DRAKE POKER FACE 2X

HPF CREAM SODA Y010

CDI HOMETOWN 246A

D: SKORS RUBY 238F

SKORS RED RUBY 284Z

GW REDESTINED 642X

CDI MS TRUMP 86U

YR KING RANCH 13S

SKORS MISS 82N

ACT BW	ADJ WW	CE	BW	WW	CSA Spring EPDs				
					YW	Milk	MCE	MWW	CWT
77	764	9.0	1.4	78.1	116.7	21.8	5.2	60.9	19.3

A calving ease prospect here that started out with just a 77 lb birthweight and has really matured into a strong herd sire prospect. He's about as dark red as they come, out of a dark red, good uddered cow. His sire, Bond, has been utilized in a number of programs for his calving ease, and has proven to add a lot of substance to his calves. We have been really impressed with the Bond calves, both bull and heifers. We calved out a number of his daughters this year and they are excellent uddered, broody females. This calving ease, maternal and dark red colour are highly desirable traits that this bull will produce.

HOMO POLLED

Dam:
Skors Ruby 238F



54

LTS RAZOR 4110M

PG1500755

LTS 110M

POLLED

FEB. 11, 2024

CMS SOCHI 307A

S: R PLUS RAZOR 0075H

BERWEST BRE 422B

DRAKE POKER FACE 2X

YR BLK PRIMADONNA 930W

SKORS CROCKET 252X

BERWEST WINONA 923W

LCDR WITNESS 541C

D: LTS BLK TESS 2010K

TPP CROCUS MS LOTTO 20C

OLF OTIS Y43

WS MOTHER LODGE W21

SPRINGCREEK LOTTO 52Y

REMINGTON ROSIE 95Y

ACT BW	ADJ WW	CE	BW	WW	CSA Spring EPDs				
					YW	Milk	MCE	MWW	CWT
71	805	8.7	1.9	82.4	122.0	24.2	6.7	65.4	36.6

A heifer bull here that you will want to look up on sale day. Dark red, smooth shouldered with a nice small head to excel in the calving ease department. His sire, R Plus Razor is a bull that we used exclusively in our heifer pen for the last three years with great results. I would have to say he is the easiest calving bull we have ever owned, and one that made calving heifers a pleasure. This bull's dam is a very nice Witness daughter, back to our 20C cow that is one of our strongest black cow families. Tons of maternal and calving ease here, look for this bull to carry that forward.

HOMO POLLED

Sire:
R Plus Razor 0075H



55

LTS FENWAY 4144M



Dark red, balanced, stout and eye appealing. The first son to sell off of our new herd bull WFL FENWAY 2001K. His first calf crop was almost all heifers, but it looks like we will have a number of sons for next year's sale so that has us excited. When we set out to find a new red herd bull we decided to pursue the best Betts son we could find, and Fenway rose to the top. He was the leadoff bull at Westway Farms, and he continues to develop into an impressive herd sire. This bull's dam is a beautiful dark red Bootlegger daughter that you would be proud to have as the dam to your next herd bull. No guess work here, a balanced and complete bull with a lot to offer. **HOMO POLLED**



Sire: WFL Fenway 2001K

Maternal Brother:
LTS Fortress 85J

APPLIED FOR LTS 144M POLLED MAR. 6, 2024

ACT BW	ADJ WW	CE	BW	WW	CSA Spring EPDs				
					YW	Milk	MCE	MWW	CWT
86	795	8.1	3.8	79.7	114.9	20.3	5.3	60.2	25.5

SVS BETTS 808F
S: WFL FENWAY 2001K
 MAF NOREMAC 94E

TNT BOOTLEGGER Z268
D: LTS CROCUS MOOKIE 26D
 LTS CROCUS MS IRON 19Z

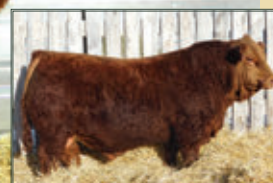
BGS/BM CAPTAIN SCREAM 63D
 WFL RED SAGE 506C
 MAF COWTOWN 27B
 IPU MS. 16M NOREMAC 51X
 DCR MR MOON SHINE X102
 TNT MISS W70
 RFS RED IRON T20
 TPP CROCUS RED SPICE 18S

56

LTS TYCOON 4089M



A very complete, deep bodied bull with lots of hair and a square hip. His dam has been a foundation female that produced naturally until she was 14 years old, and we also flushed her extensively. This bull is the result of one of those flushes. The females from this cow family are consistently deep bodied, broody females with tons of rib shape and excellent udders. All of this maternal strength backing this bull, combined with the powerful Tycoon sire make this bull an appealing choice. **HOMO POLLED**



Sire: SVS Tycoon 841F

Full Brother:
LTS Tycoon 52J

APPLIED FOR LTS 89M POLLED JAN. 28, 2024

ACT BW	ADJ WW	CE	BW	WW	CSA Spring EPDs				
					YW	Milk	MCE	MWW	CWT
91	830	8.6	3.5	84.9	120.1	29.5	4.1	71.9	20.3

SVS BROOKS 669D
S: SVS TYCOON 841F
 SVS RED ANNIE 411B

GOLDEN OPPORTUNITYHR R851
D: MISS R269 HR UR269
 MS RANGER HR R269

MRL RED WHISKEY 101B
 SVS RED SARA 92X
 ACS EVERREADY 970W
 3D MISS RED NOREMAC 211U
 SS GOLD MINE L42
 HS REFLECTIONS J34
 RED RANGER HRN57
 MISS EAGLE HR J269

57

LTS REBEL 4120M



Dam:

Sun Star Tameka 37K



PG1500738

LTS 120M

POLLED

FEB. 17, 2024

CROSSROAD BLACK REBEL 4F
S: BLACK GOLD REBEL 2H
 BLACK GOLD DESTINY'S CHILD

HART STATE OF WAR 056C
 CROSSROAD DE-VI 468D
 JS SURE BET 4T
 MS BGS MEET MY DESTINY 3Z

MRK PERSPECTIVE 20E
D: SUN STAR TAMEKA 37K
 SUN STAR TAMEKA 46D

MR CCF VISION
 LRX MS BLACK 91A
 REMINGTON RED MILE 651Y
 SUN STAR TAMEKA 15A

ACT BW	ADJ WW	CE	BW	WW	CSA Spring EPDs				
					YW	Milk	MCE	MWW	CWT
92	783	9.5	3.8	71.1	106.7	20.5	4.9	56.1	21.7

A dark red, deep ribbed, well balanced bull with a lot of eye appeal. He is very smooth and clean through the front end, while still having good thickness throughout. He moves out freely with a long full stride, something we feel is very important. His dam is a dark red, deep sided young cow with a very nice udder and a bright future ahead of her. Don't miss out on this one, as he will sire a consistent quality calf crop.

HOMO POLLED

58

LTS REPUBLIC 4063M



Sire:

SVS Rancher 42H



PG1500736

LTS 63M

POLLED

JAN. 14, 2024

SVS TYCOON 841F
S: SVS RANCHER 42H
 HLTS SAMMIE

SVS BROOKS 669D
 SVS RED ANNIE 411B
 WS BEEF KING W107
 BRANT DONT YA LOVE ME

IPU RED DEPUTY 25C
D: TSF EVETTE 36E
 TSF CANDY 16C

KUNTZ SHERIFF 8A
 IPU 56U MS. RED LINER 81A
 TNT GUNNER N208
 TSF APRIL 24A

ACT BW	ADJ WW	CE	BW	WW	CSA Spring EPDs				
					YW	Milk	MCE	MWW	CWT
87	782	8.5	3.1	92.4	132.4	26.1	3.8	72.3	31.3

A very complete Rancher son that bends the curve from birth to weaning. Moderate at birth, strong at weaning and he's only become more impressive as he's matured. You will definitely notice him in the pen with his depth of body, full hip and balanced profile. His dam is a very attractive Deputy x Gunner daughter, both of which are bulls that have proven to produce excellent females. I would certainly suggest keeping all of the daughters off of this bull as they will be ones to build around.

HOMO POLLED

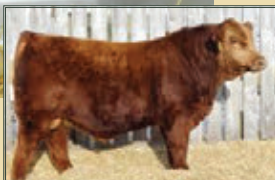
59

LTS BOND 4085M



Sire:

SVS Bond 973G



PG1500772

LTS 85M

POLLED

JAN. 27, 2024

MADER WALK THIS WAY 224B
S: SVS BOND 973G
 CMS SODA POP 410B

NCB COBRA 47Y
 MADER P IRON SUGAR 7X
 DRAKE POKER FACE 2X
 HPF CREAM SODA Y010

RUST RIO GRANDE 7022 ET
D: LTS FAITH 14G
 LTS CROCUS MS DOM 11Z

WFL WESTCOTT 24C
 RF CERTAINLY FLIRTIN 202Z
 STF DOMINANCE T171
 MISS R269 HR UR269

ACT BW	ADJ WW	CE	BW	WW	CSA Spring EPDs				
					YW	Milk	MCE	MWW	CWT
92	791	9.1	2.4	76.3	113.3	19.1	3.9	57.3	12.9

Here is an early maturing, free moving bull with lots of natural thickness and testicle development. Sired by Bond, a bull that has proven to not only be easy calving but a bull that adds a lot of substance to his calves. We have really been impressed with the whole sire group of Bond calves, both bulls and females. We love the easy keeping look that they have, and they are excellent footed cattle. This bull has a real presence to him and will be easy to find sale day.

HOMO POLLED

REF

WALKING HERDSIRE: LFE SLASH 3127G



BPG1301073

LFE 3127G

POLLED

MAY 20, 2019

WHEATLAND BULL 680S
S: RF SLASH 323A
 RF SHEEZA HUSSEY TOO 9U

LFE GOTHAM 819Y
D: LFE BS KEEPSAKE 41C
 LFE BS KEEPSAKE 605Y

WHEATLAND BULL 131L
 WHEATLAND LADY 351N
 CNS DREAM ON L186
 RF WHATA HUSSY 3S
 LFE THE DARK NIGHT 350U
 LFE BEST LADY 47W
 LFE ENTOURAGE 337U
 LFE BS KEEPSAKE 248T

ACT BW	ADJ WW	CE	BW	WW	CSA Spring EPDs		MCE	MWW	CWT
					YW	Milk			
84	782	10.3	2.9	85.8	125.6	23.7	5.0	66.6	27.7

Slash is a bull that we feel has taken our black program to the next level. The quality and consistency he has produced continues to impress us. He adds awesome hair, eye appeal, natural thickness and length to his calves. We have now calved out two groups of Slash daughters and we are very pleased with them, broody females with excellent udders and maternal traits. The Slash progeny are all stamped the same and you can certainly pick them out for their appealing traits. His sons will surely pass these on to the next generation, invest in one to carry your program forward!

60

LTS SLASH 4078M



The Opal 1F cow continues to ring the bell year after year! This will be the fourth year in a row her son has risen to the top of the bull pen. Last year's son was the high selling black bull to JP Cattle Co & Rocky Meadow Ranch, while other top end sons have sold to the Crandall Ranch and to Cypress Colony. She not only excels in production, but also in eye appeal, volume and udder quality. She also consistently has lighter birthweight calves as shown by this year's son. He is balanced and stout, yet smooth through the shoulder and front third. A blend of maternal, calving ease and performance that gives you so many options to utilize him in the future. Buy with confidence!



Great Granddam: CG Black Opal 652S

Maternal Brother: LTS Amplify 2062K

Maternal Brother: LTS Standout 3083L

Maternal Brother: LTS Statesman 7J

BPG1500775

LTS 78M

POLLED

JAN. 22, 2024

ACT BW	ADJ WW	CE	BW	WW	CSA Spring EPDs		MCE	MWW	CWT
					YW	Milk			
78	769	11.2	1.3	78.0	114.7	24.7	5.2	63.7	29.7

RF SLASH 323A
S: LFE SLASH 3127G
 LFE BS KEEPSAKE 41C

MADER/CS/RUST CRUZ 3D
D: MADER OPAL 1F
 MADER OPAL 207C

WHEATLAND BULL 680S
 RF SHEEZA HUSSEY TOO 9U
 LFE GOTHAM 819Y
 LFE BS KEEPSAKE 605Y

LFE BOUNTY 3118Z
 LFE BS VIOLET 641A
 LFE BS LEWIS 322U
 CG BLACK OPAL 652S

61

LTS SLASH 4133M



Maternal Brother:
LTS Enhance 117J



BPG1500759

LTS 133M

POLLED

FEB. 22, 2024

RF SLASH 323A
S: LFE SLASH 3127G
LFE BS KEEPSAKE 41C

WHEATLAND BULL 680S
RF SHEEZA HUSSEY TOO 9U
LFE GOTHAM 819Y
LFE BS KEEPSAKE 605Y

NCB COBRA 47Y
D: LTS CROCUS MS COBRA 45E
LTS CROCUS MS TANKER 5A

LFE VIPER 455U
NCB MISS DREAM 22T
TNT TANKER U263
REMINGTON MS TARGET 135U

ACT BW	ADJ WW	CE	BW	WW	CSA Spring EPDs				
					YW	Milk	MCE	MWW	CWT
95	774	7.5	4.1	84.0	124.5	21.0	4.8	63.0	25.0

The dam of this bull is a Cobra daughter that has been a very consistent producer, with an excellent udder and strong performance. A full brother sold in last year's sale to Pawluk farms at Vegreville, and a maternal brother sold to B7 Farms at Fox Valley. He shows a strong EPD profile, with CE, BW, WW and YW all ranking him highly. A well-rounded bull out a proven cow with a ton to offer.

HOMO POLLED/HETERO BLACK

62

LTS SLASH 4111M



Paternal Brother:
LTS Sledge 3086L



BPG1500761

LTS 111M

POLLED

FEB. 11, 2024

RF SLASH 323A
S: LFE SLASH 3127G
LFE BS KEEPSAKE 41C

WHEATLAND BULL 680S
RF SHEEZA HUSSEY TOO 9U
LFE GOTHAM 819Y
LFE BS KEEPSAKE 605Y

WFL ABSOLUTE 51Y
D: LTS CROCUS CHANEL 2E
DEEG MS CHANEL 17C

LFE STRAIT UP 454W
WFL MS BLACK FLASH 8068U
NCB COBRA 47Y
DEEG MS 23Z

ACT BW	ADJ WW	CE	BW	WW	CSA Spring EPDs				
					YW	Milk	MCE	MWW	CWT
89	747	9.2	3.1	78.5	114.3	20.9	3.7	60.2	22.7

An eye appealing, heavy haired bull that will add thickness and dimension to your next calf crop. His sire has done exactly that, added muscle and that easy keeping look. We have calved out two groups of Slash daughters now and we are very pleased with them, broody females with excellent udders. The Slash progeny are all stamped the same and you can certainly pick them out for their appealing traits. His sons will surely pass these on to the next generation, invest in one to carry your program forward!

HOMO POLLED/HOMO BLACK

63

LTS SLASH 4136M



Paternal Brother:
LTS Slash 3118L



BPG1500748

LTS 136M

POLLED

FEB. 25, 2024

RF SLASH 323A
S: LFE SLASH 3127G
LFE BS KEEPSAKE 41C

WHEATLAND BULL 680S
RF SHEEZA HUSSEY TOO 9U
LFE GOTHAM 819Y
LFE BS KEEPSAKE 605Y

SPRINGCREEKWALLBANGER11SZ
D: SPRINGCREEK POLLY 39C
SPRINGCREEK POLLY 125Z

HARVIE JDF WALLBANGER111X
SPRINGCREEK LINNE 72S
HART ALL IN W382
SPRINGCREEK POLLY 195W

ACT BW	ADJ WW	CE	BW	WW	CSA Spring EPDs				
					YW	Milk	MCE	MWW	CWT
92	785	8.1	3.8	82.1	123.1	23.0	3.8	64.1	32.5

This is the youngest black bull in the pen, but you would never know it. He has a ton of performance and power that will definitely produce an impressive calf crop. His numbers support this as well, as he ranks in the top 25% of the breed for both WW and YW EPDs, while still showing good numbers for CE & BW. He will also be one of the highest WPDA bulls in the sale. His dam is a really good uddered 10-year-old cow that looks half her age. Look for this bull to have a big impact, as you will notice the extra performance in his first calf crop.

HOMO POLLED/HOMO BLACK

64

LTS BOOMER 4086M



Dam: Erixon Lady 134E

Super stout, hairy, loose made and deep sided. His dam, the Lady 134E cow, has put together an impressive production record so far in her young career. She was purchased from the prestigious Cobra Event a few years ago as one of the high selling bred heifers. Her first two calves are impressive daughters in herd. Her third calf sold in the Jenna Flirt Event to Ashworth Farm & Ranch, and her fourth calf was a son that sold in the bull sale to Oh Kay Farms at Red Deer. Her fifth calf was one of our high selling and feature bulls last year to Carmichael Farming Co. An impressive herd sire candidate, backed by an elite cow and an outcross pedigree means the possibilities are endless for this bull. Significant opportunity here, take advantage. **HOMO POLLED/ HOMO BLACK**



Maternal Sister: LTS Joy 1G

BPG1500742

LTS 86M

POLLED

JAN. 27, 2024

ACT BW	ADJ WW	CE	BW	WW	CSA Spring EPDs		MCE	MWW	CWT
					YW	Milk			
97	819	4.3	6.7	103.5	157.1	25.3	1.0	77.1	49.3

RF SHAKEDOWN 074H
S: **RF BOOMER 262K**
RF FLIRT 850F

TNGL GRAND FORTUNE Z467
D: **ERIXON LADY 134E**
ERIXON LADY 48C

NGDB STRUCTURE 34D
IPU MS. COWBOY CUT 135D
WFL WESTCOTT 24C
RF NOT JUST A FLIRT 404B
SS EBONY'S GRANDMASTER
AJE/HS/MBCC HOPE FLOATS
ERIXON DEALER 63Z
ERIXON LADY 112Y

65

LTS BOLD 4067M

Maternal Brother:
LTS Alliance 25HMaternal Brother:
LTS Entourage 23J

Character. Herd Bull Presence. The Look. Whatever term you want to use, this guy has it. You will find him right away when you enter the pen, and you'll keep coming back to him. Long and deep, with a pile of rib shape and eye appeal. He ranks in the top 10% of the breed for both WW & YW numbers, and his dam is a beautiful cow that consistently has lighter birthweight calves. Some just have that look, and it's something you will certainly want to incorporate into your next calf crop. Look here for your next great herd bull.

**HOMO POLLED
HETERO BLACK**

BPG1500750

LTS 67M

POLLED

JAN. 16, 2024

ACT BW	ADJ WW	CE	BW	WW	CSA Spring EPDs		MCE	MWW	CWT
					YW	Milk			
83	833	8.6	2.8	95.2	138.2	27.5	3.7	75.1	44.2

RF SHAKEDOWN 074H
S: **RF BOOMER 262K**
RF FLIRT 850F

HSF HIGH ROLLER 12T
D: **SKORS TATTIANA 5E**
SKORS TATTIANA 73C

NGDB STRUCTURE 34D
IPU MS. COWBOY CUT 135D
WFL WESTCOTT 24C
RF NOT JUST A FLIRT 404B
TJ 57J THE GAMBLER
HSF RED FORTUNES SIS 33
MR HOC BROKER
SKORS MS JOKER 7P

66

LTS SLASH 4094M

BPG1500752

LTS 94M

POLLED

FEB. 1, 2024

RF SLASH 323A
S: LFE SLASH 3127G
 LFE BS KEEPSAKE 41C

WHEATLAND BULL 680S
 RF SHEEZA HUSSEY TOO 9U
 LFE GOTHAM 819Y
 LFE BS KEEPSAKE 605Y

SKORS BLACK ENTICER 219C
D: LTS CROCUS GOLDY 44E
 SFM BS 24C

SKORS BLACK ENTICER 4W
 SKORS MS BROOKS 25Z
 SPRINGCREEK ROCKER 909A
 SFM MISS 17T

ACT BW	ADJ WW	CE	BW	WW	CSA Spring EPDs				
					YW	Milk	MCE	MWW	CWT
76	748	10.6	2.1	83.5	125.6	21.2	7.0	63.0	36.8

An eye appealing, moderate birth weight bull with great hair and a lot of maternal strength in his background. Wide topped, with lots of muscle while maintaining a smooth shoulder and attractive head. We are very impressed with the Slash calves and the job that he has done. He sires extra muscle and depth, while still maintaining eye appeal. A well-rounded bull that will be a strong addition to any program.

HETERO POLLED /HOMO BLACK

Sire:
 LFE Slash 3127G

67

LTS BENTLEY 4069M

BPG1500739

LTS 69M

POLLED

JAN, 17, 2024

WHEATLAND BENTLEY 630D
S: IPU BENTLEY 81F
 CLAYHILL FANCY LUCA 39A

WHEATLAND FINAL AFFAIR
 WHEATLAND LADY 72X
 MR NLC UPGRADE U8676
 CLAYHILL FANCY PANTS 32S

SPRINGCREEK LOTTO 52Y
D: SPRINGCREEK LIMA 35B
 SPRINGCREEK LIMA 69W

KOP CROSBY 137W
 SPRINGCREEK BLK TESS 25T
 ACS RED REBEL 656S
 SPRINGCREEK TARA 7P

ACT BW	ADJ WW	CE	BW	WW	CSA Spring EPDs				
					YW	Milk	MCE	MWW	CWT
87	757	8.4	4.0	86.4	119.4	18.8	6.8	62.0	24.0

A blaze face bull that stacks maternal greats in his pedigree. The Bentley daughters are highly sought after within the breed, and the Lotto daughters are some of the best producing cows we have had over the years. This bulls 11-year-old dam is one that we rank highly and has proven her worth many times over. Stacking generations of highly productive females leads to consistent quality and we believe that's what this bull will produce for your program.

HOMO POLLED/HETERO BLACK

Sire:
 IPU Bentley 81F

68

LTS BENTLEY 4096M

BPG1500765

LTS 96M

POLLED

FEB. 1, 2024

WHEATLAND BENTLEY 630D
S: IPU BENTLEY 81F
 CLAYHILL FANCY LUCA 39A

WHEATLAND FINAL AFFAIR
 WHEATLAND LADY 72X
 MR NLC UPGRADE U8676
 CLAYHILL FANCY PANTS 32S

EDN SAMBO 192S
D: LTS CROCUS MS SAMBO 51A
 TPP CROCUS MISS RED TIA

EDN PUNCH 75P
 EDN NECTAR 132N
 EDN RED CLOUD 18P
 TPP CROCUS MISS 66K 30N

ACT BW	ADJ WW	CE	BW	WW	CSA Spring EPDs				
					YW	Milk	MCE	MWW	CWT
92	774	6.3	4.3	79.5	110.7	23.5	2.4	63.3	28.3

A Bentley son out of an impressive 12-year-old cow that always looks good no matter what time of year it is, brings home a top calf at weaning every year. His sire Bentley has proven to not only produce pounds at weaning, but he also produces highly sought after daughters as well. A great mix of maternal and performance in this bull that will sire an impressive group of calves.

Brother to Dam:
 LTS Proclaim 53H

69

LTS BOOM 4068M



This bull's dam has raised a number of top end bulls over the years. She also raised a daughter that is currently working at McMillen Ranching, while another daughter sold to Lewis Farms. With the quality and consistency that this cow has shown over the years, she is currently being flushed to further enhance her influence on our program. The grandam was also flushed, and produced naturally up until 15 years of age. If longevity, consistency and a high quality cow family are at the top of your list of priorities, have a serious look here.

HOMO POLLED
HETERO BLACK



Maternal Sister:
LTS Pandora 44H



Maternal Sister:
LTS Pandora 15F

BPG1500732 **LTS 68M** **POLLED** **JAN. 16, 2024**

ACT BW	ADJ WW	CE	BW	WW	CSA Spring EPDs				
					YW	Milk	MCE	MWW	CWT
85	825	5.7	4.8	97.4	137.3	25.7	2.0	74.4	42.1

RF SHAKEDOWN 074H
S: RF BOOMER 262K
RF FLIRT 850F

R PLUS PRAIRIE FIRE
D: LTS CROCUS MS BLACK 12B
MRL MISS 804W

NGDB STRUCTURE 34D
IPU MS. COWBOY CUT 135D
WFL WESTCOTT 24C
RF NOT JUST A FLIRT 404B
PRL TOBACCO 201T
MISS R PLUS 8240U
TNT POWER SURGE T404
CROSSROAD PIZAZZ 274P

70

LTS SECURITY 4076M



About as long, deep and wide as you will find all spring. Standing square on big correct feet, this guy is impressive from every angle. His dam is an excellent deep bodied Cobra daughter with a very nice udder. The Supercharged calves continue to impress us. The sons always rise to the top of the pen every year with their natural thickness, power and sound structure. The daughters have beautiful udders and are some of our strongest young females. A $\frac{3}{4}$ brother to this bull was our high seller two years ago and this bull patterns very closely. He will make a truly impressive herd sire and his calves will be outstanding. **HOMO POLLED/HOMO BLACK**



Sire: RF Supercharged 9150G



Maternal Brother:
LTS Superb 2006K

BPG1500768 **LTS 76M** **POLLED** **JAN. 22, 2024**

ACT BW	ADJ WW	CE	BW	WW	CSA Spring EPDs				
					YW	Milk	MCE	MWW	CWT
96	826	4.9	6.1	95.9	145.4	22.7	0.4	70.7	36.5

RF CAPACITY 742E
S: RF SUPERCHARGED 9150G
RF CERTAINLY FLIRTIN 202Z

NCB COBRA 47Y
D: LTS MS COBRA 7F
LTS CROCUS MS THOR 24D

WFL WESTCOTT 24C
RF FAMOUS 409B
WHEATLAND STOUT 930W
RF FLIRTIN FOR CERTIN 37U
LFE VIPER 455U
NCB MISS DREAM 22T
MRL THOR 207B
REMINGTON MS TARGET 135U

Return to
BOHRSON
MARKETING SERVICES
28336 TWP Rd 320
Mountain View County, AB T4H 4M7



RETURN POSTAGE GUARANTEED
PORT DE RETOUR GARANTI

If you wish to stop receiving catalogues from
BMS, please email jodi@bohrson.com or call/text
403-519-3515 to be removed from the mailing list

